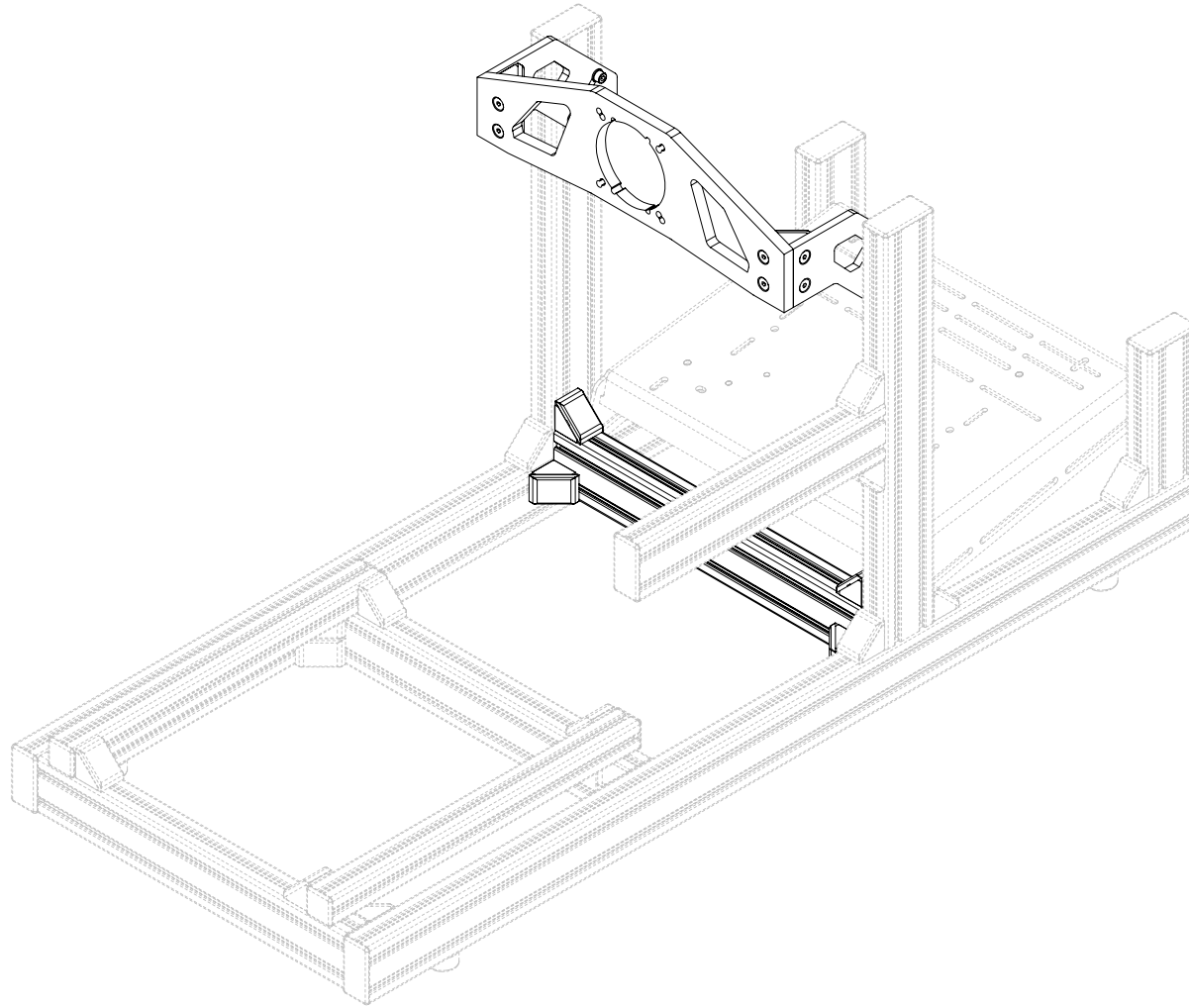


SIM LAB

INSTRUCTION MANUAL



FRONT MOUNT EVO

VERSION 1.5

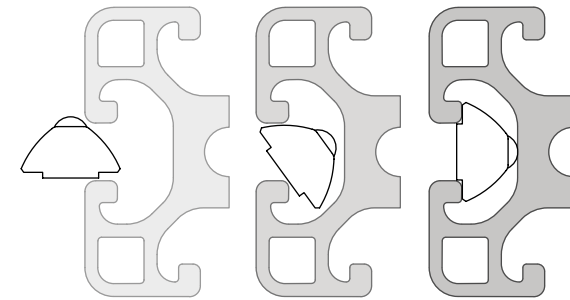
Last updated: 24-02-2022

BEFORE YOU START:

Thank you for purchasing this Sim-Lab product! On the following pages, you will find detailed instructions on assembly. This requires only a set of simple tools and some of your time. Please check the bill of materials before starting (page 10) and make sure all the parts are delivered.


Inserting Slot-Nuts:

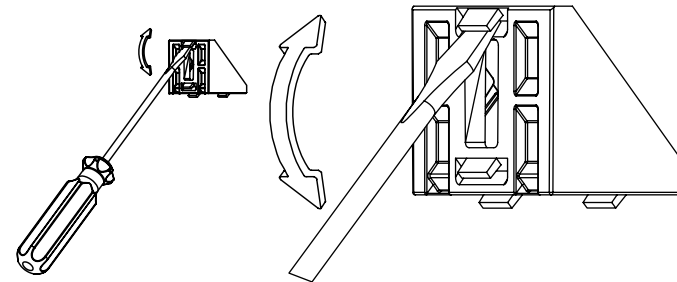
You got excited, finished the build, put the caps on, but forgot to install one element. Do not worry. It happens to everyone. In this diagram, you can see how to insert a Slot-Nut directly into the slot from the side. You can also use one of your smaller Hex wrenches to help wiggle the Slot-Nut in place.



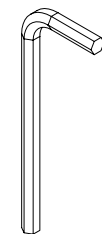
Breaking tabs:

Sometimes tabs from corner brackets need to be broken off in order to fit as instructed. Place a flathead screwdriver behind the tab and tilt upwards.

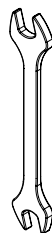
Always make sure to point away from you while doing so. To know when to do this, we will show the following symbol  next to the brackets.



Tools needed:



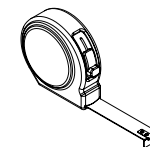
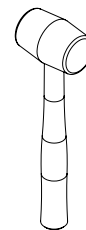
5/6MM

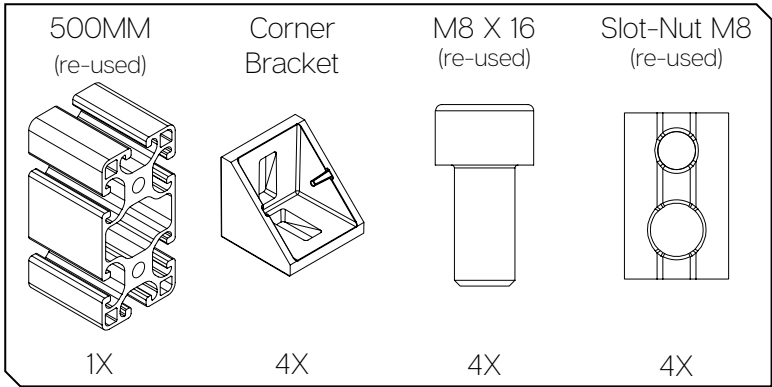


13MM



—

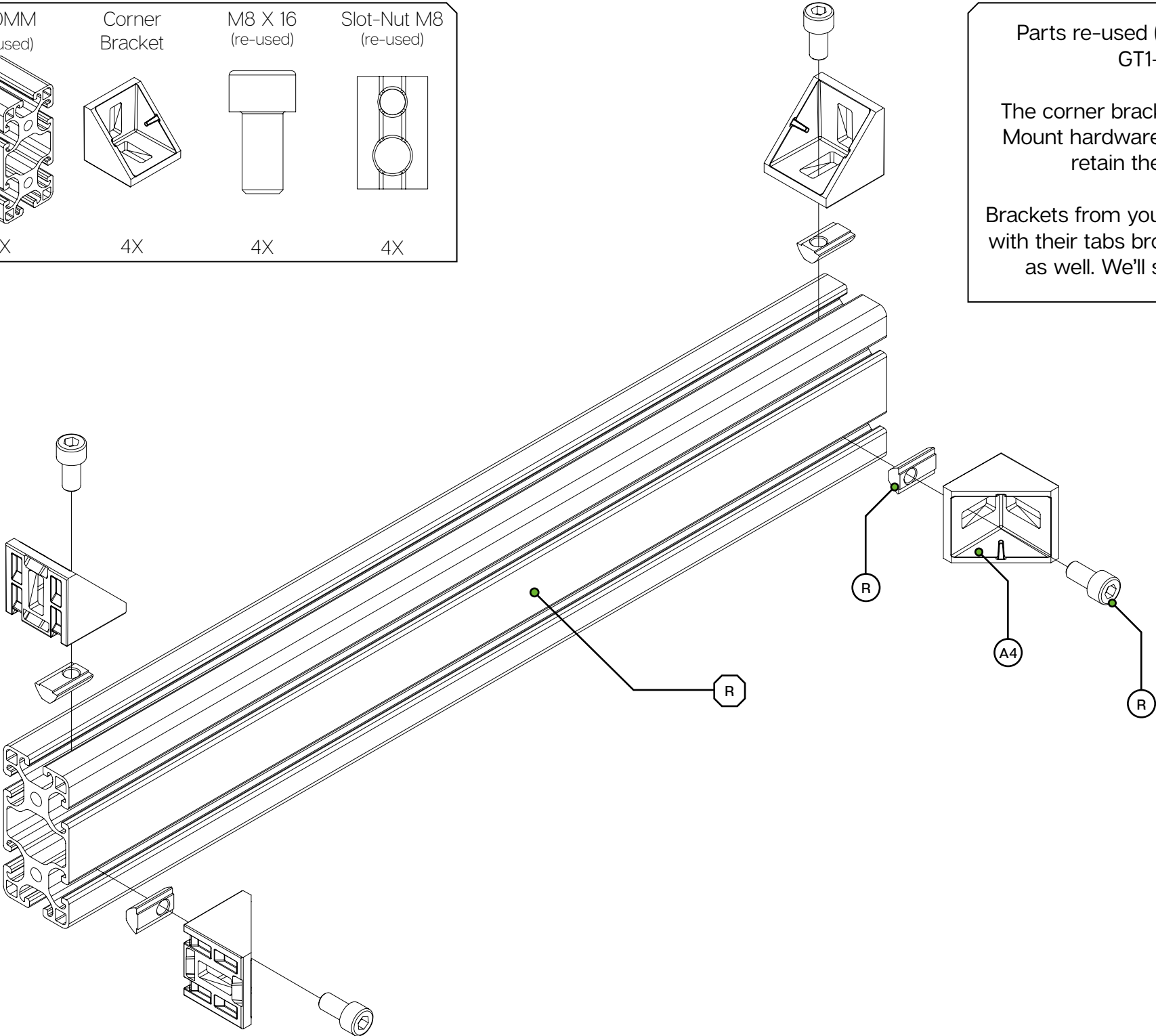




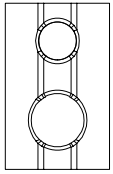
Parts re-used (R) from your existing GT1-EVO build.

The corner brackets are from the Front Mount hardware kit since they need to retain their aligning tabs.

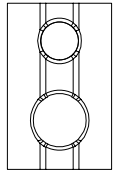
Brackets from your existing GT1-EVO build with their tabs broken off, can be re-used as well. We'll show this on Page 6.



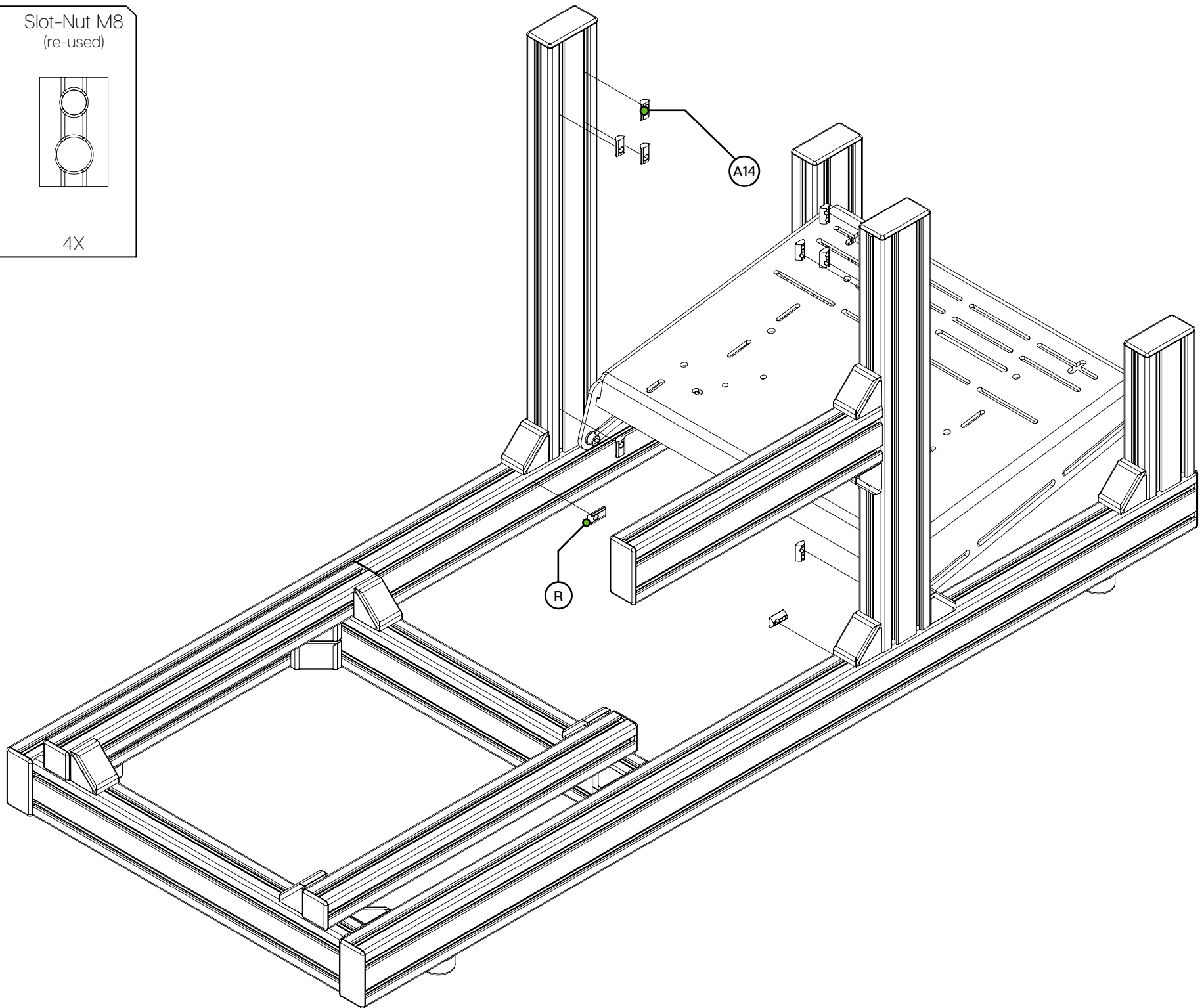
Slot-Nut M8 Slot-Nut M8
(re-used)



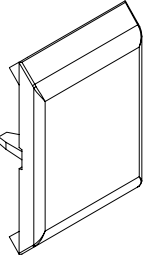
6X



4X

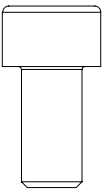


Corner Bracket
Cap (re-used)

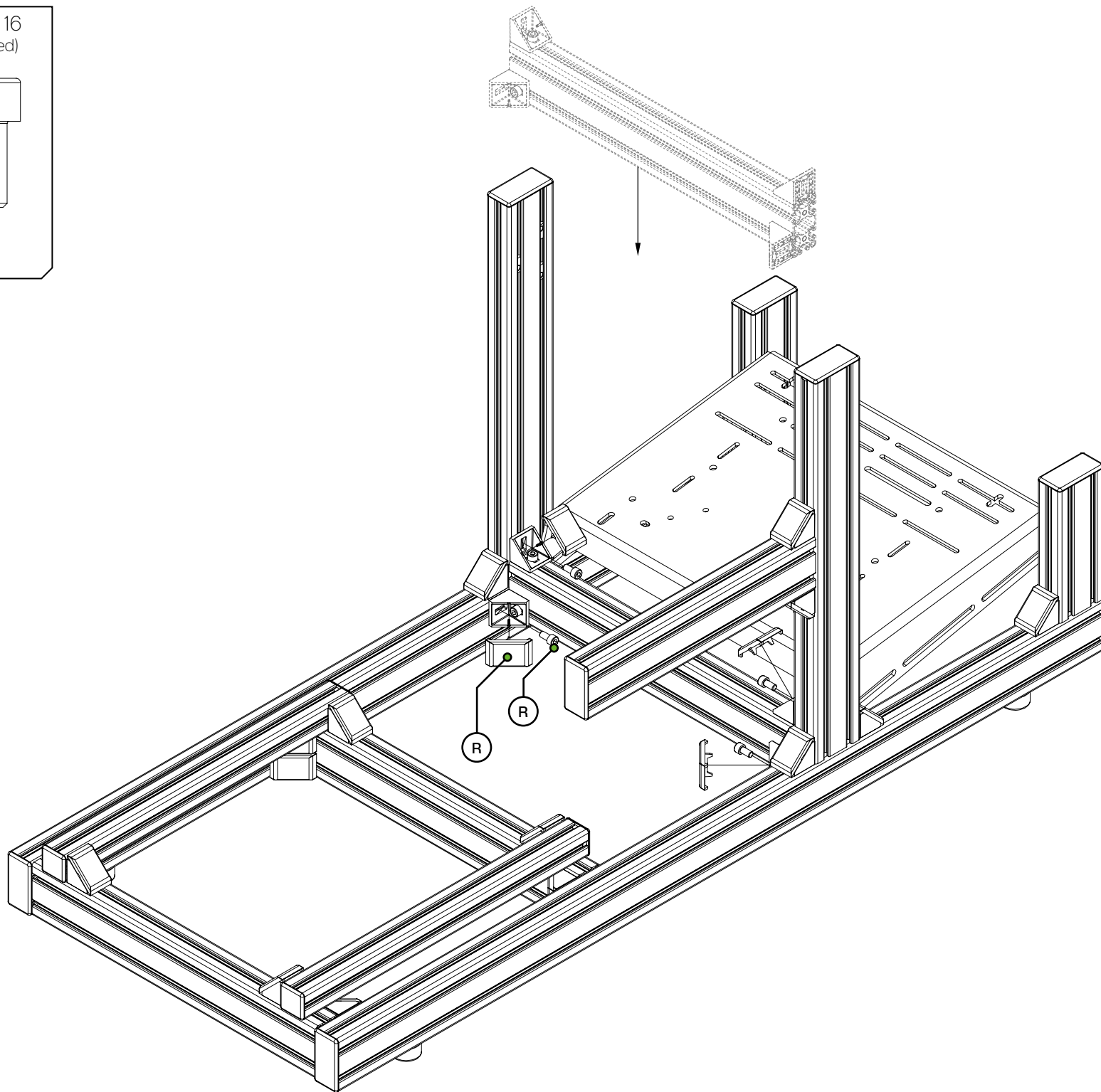


4X

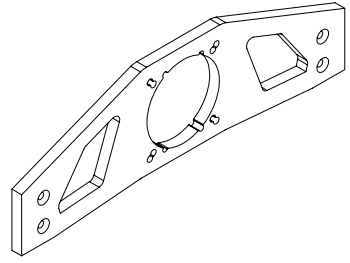
M8 X 16
(re-used)



4X

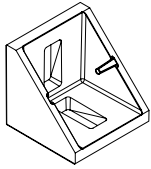


Front Mount



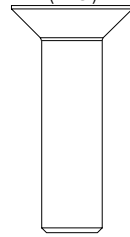
1X

Corner Bracket**



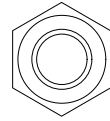
4X

M8 X 30
(A9)



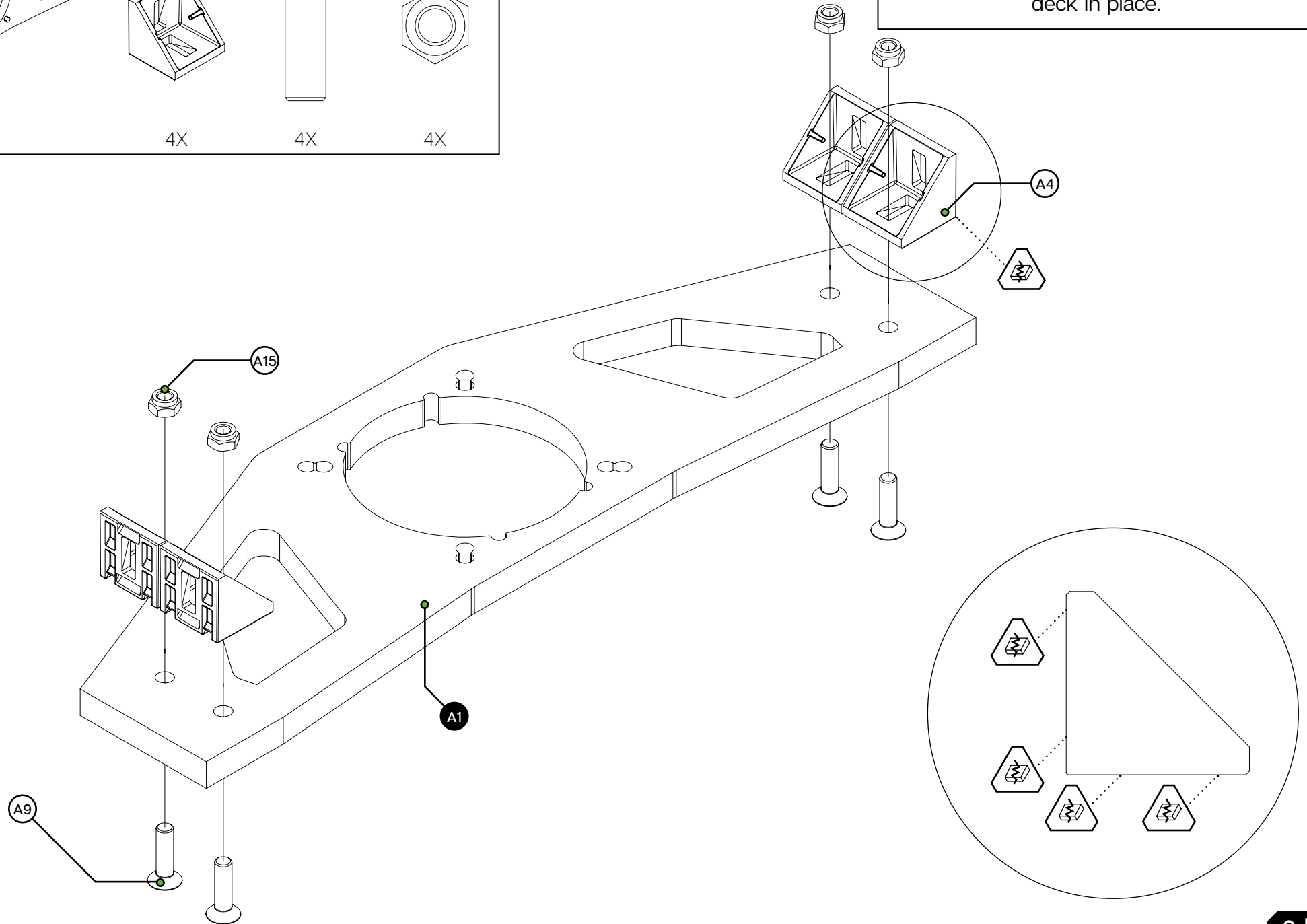
4X

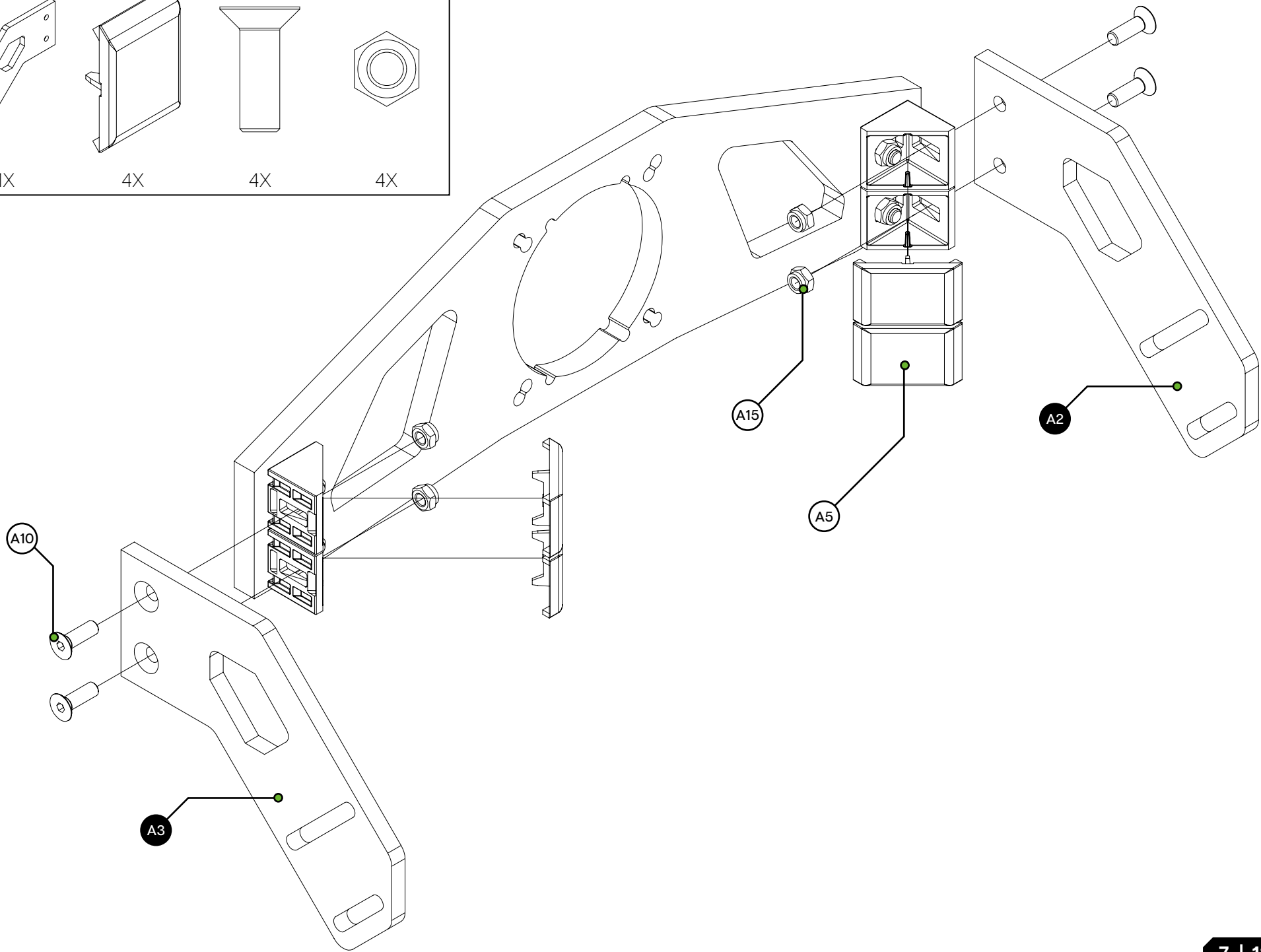
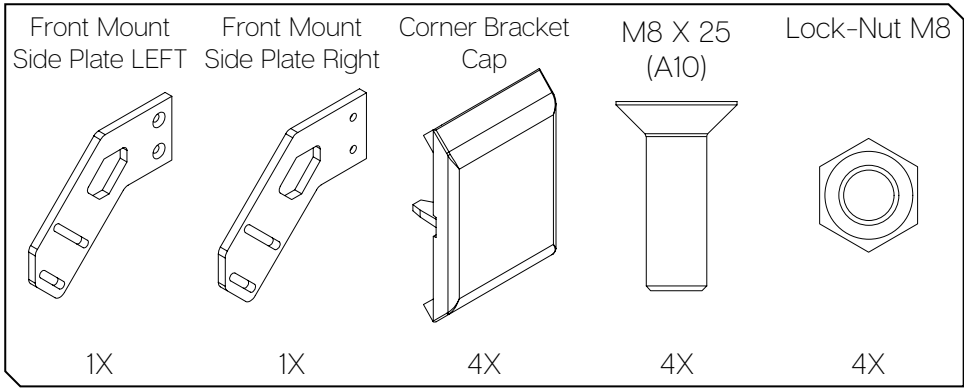
Lock-Nut M8

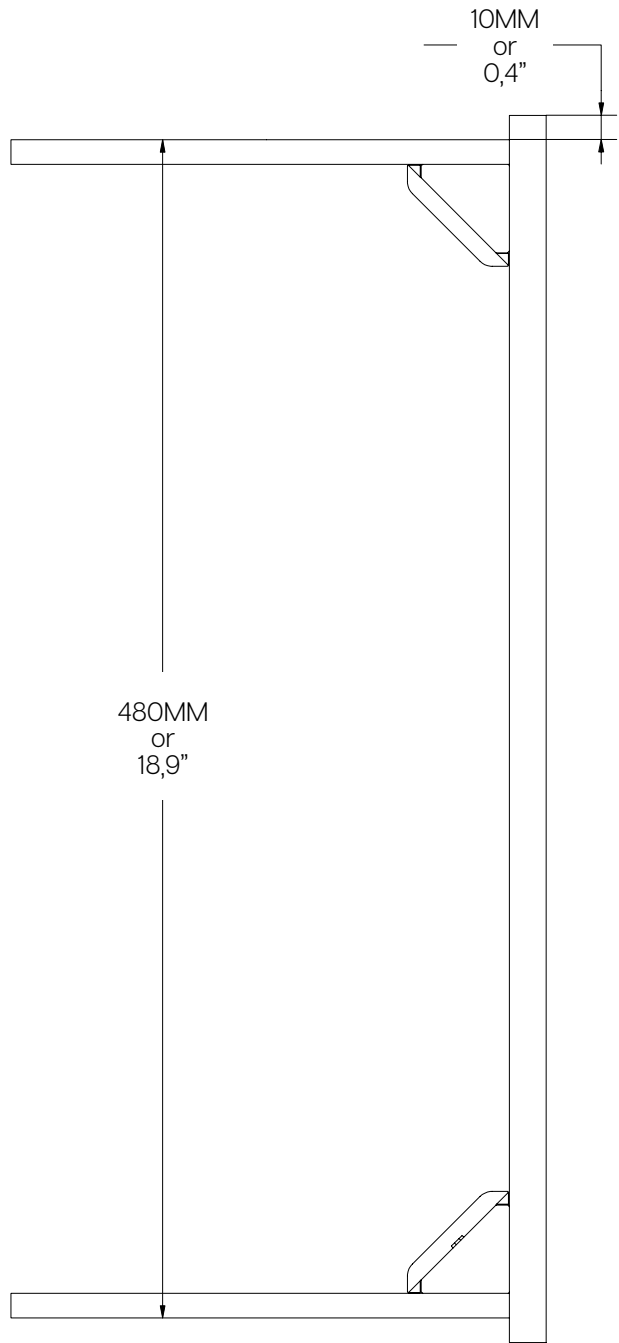


4X

In case you are converting your original GT1-EVO to a Front Mount, you can re-use the original brackets which held the wheel deck in place.

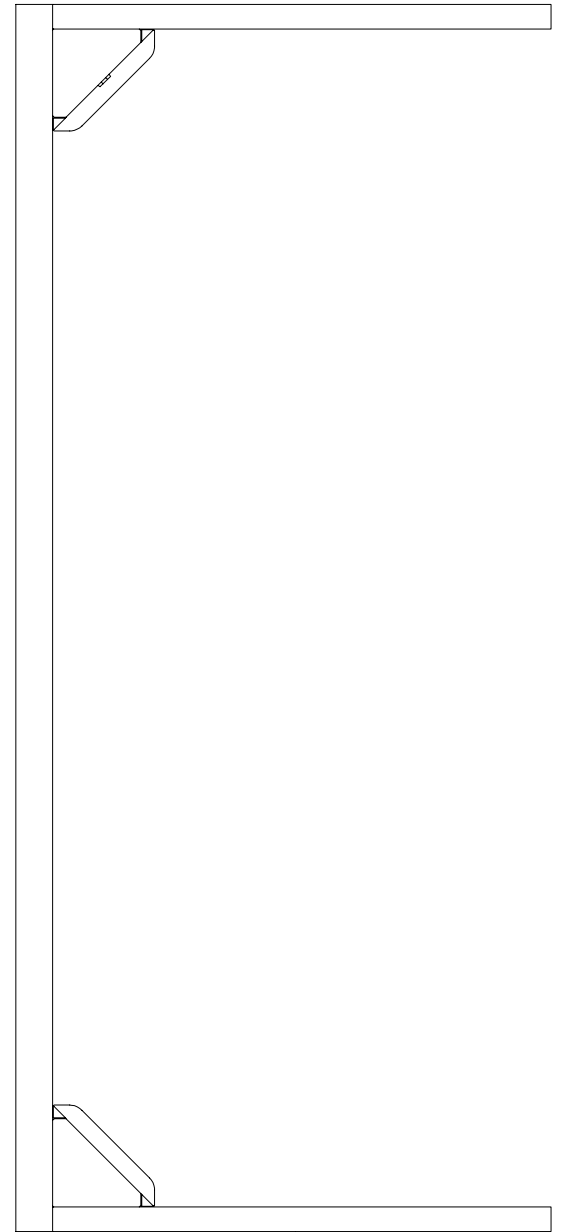






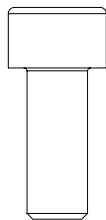
LEFT:
GT1-EVO PURCHASED
PRE-2020, OFFSET 10MM.

RIGHT:
CURRENT GT1-EVO,
SIDES FLUSH WITH FRONT MOUNT.

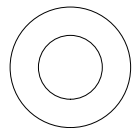


M8 X 20

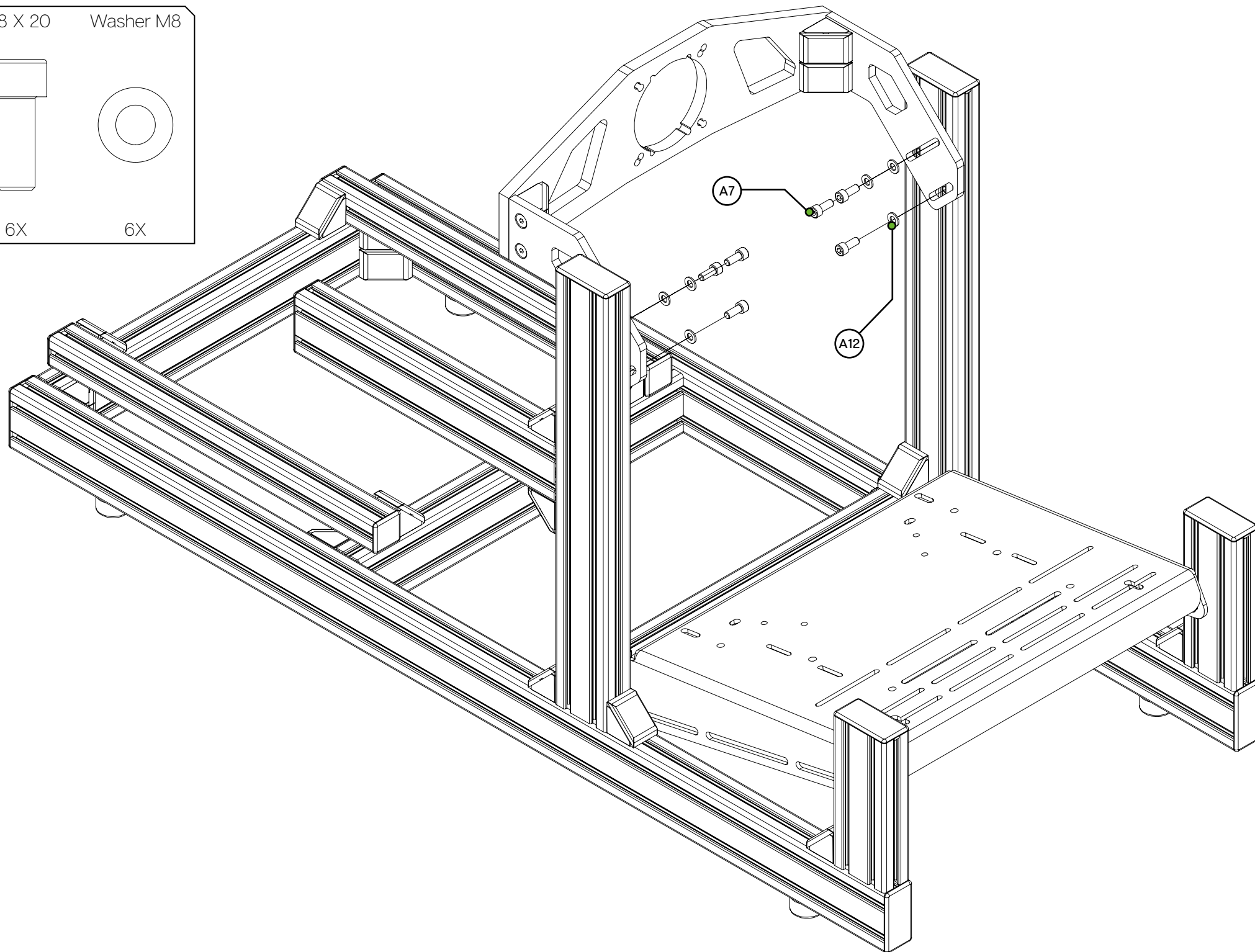
Washer M8



6X



6X



HARDWARE KIT			
#	Part	QTY	Note
A1	Front mount	1	
A2	Front mount side plate LEFT	1	
A3	Front mount side plate RIGHT	1	
A4	Corner bracket 40x40	4	
A5	Corner bracket 40x40 cap	4	
A6	Bolt M8 X 40 DIN 912	4	
A7	Bolt M8 X 20 DIN 912	8	
A8	Bolt M6 X 20 DIN 912	4	
A9	Bolt M8 X 30 DIN 7991	4	Countersunk
A10	Bolt M8 X 25 DIN 7991	4	Countersunk
A11	Bolt M8 X 16 DIN 7991	2	Countersunk
A12	Washer M8 DIN 125-A	12	
A13	Spacer male/female M6 X 10	4	
A14	Slot-Nut M8	10	
A15	Lock-Nut M8	14	
<p><i>Disclaimer: for some entries on this list, we supply more than required as spare materials. Don't worry if you have some leftovers, this is intentional.</i></p>			

If you still have some questions regarding assembly of this product or about the manual itself, please refer to our support department. They can be reached at

support@sim-lab.eu

Alternatively, we now have a Discord server where there are quite some experienced Sim-Lab customers hanging out. They might just help you along if you ask them nicely ;)

www.sim-lab.eu/discord

If you feel like printing this manual, please consider the environment before doing so. For the best results, make sure you print at 100% scale without borders.

[Product page on the Sim-Lab website:](#)

