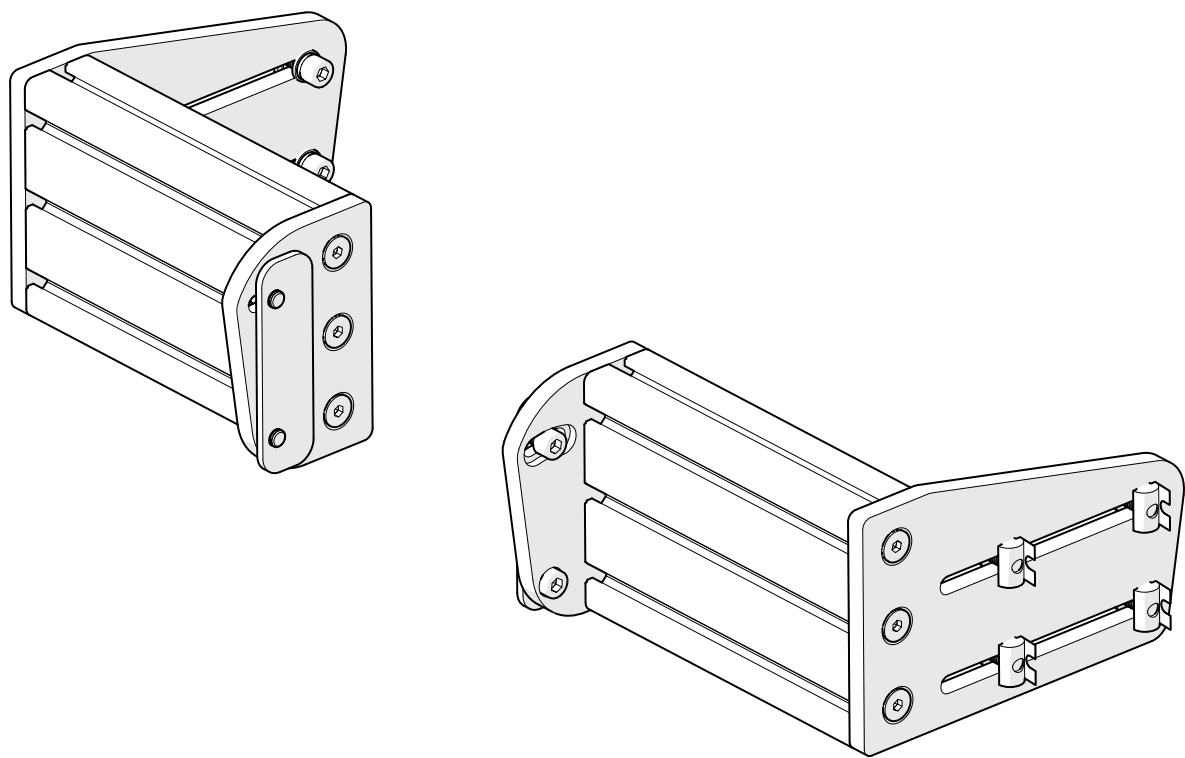


TR-One

Fanatec Direct Drive Mount

TR80-NWMA

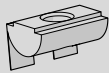


Part #	Description	QTY	Check
BOX #: TR80-NWMA			
SH-M8-25	M8 x 25mm Hex Screw	12	
SF-M8-20	M8 x 20mm Flat Screw	12	
WF-M8	M8 Flat Washer	8	
WL-M8	M8 Lock Washer	8	
NS-M8	M8 Spring T-Nut	8	
WM-TR1-FN	Fanatec Podium/CSL DD Plates (5mm)	4	
WM-TR1-WP	Wheel Mounting Plates	2	
WM-TR1-PP	Side Profile Mounting Plates	2	
AT-120-180	180mm 40 x 120mm Aluminium Profile (Threaded)	2	

* **NOTE:** Extra hardware may be included as spare parts

TR80-NWMA

1



NS-M8 x8



SH-M8-25 x8



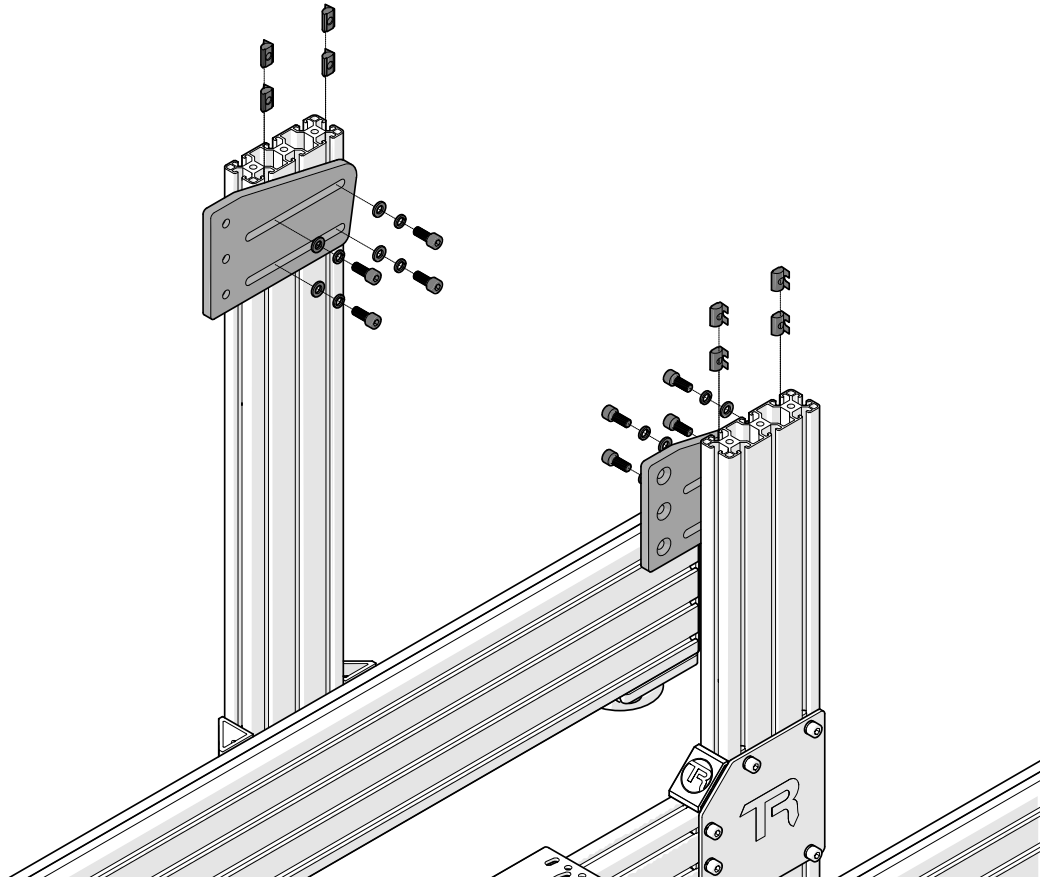
WL-M8 x8



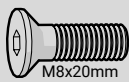
WF-M8 x8



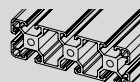
WM-TR1-PP x2



2



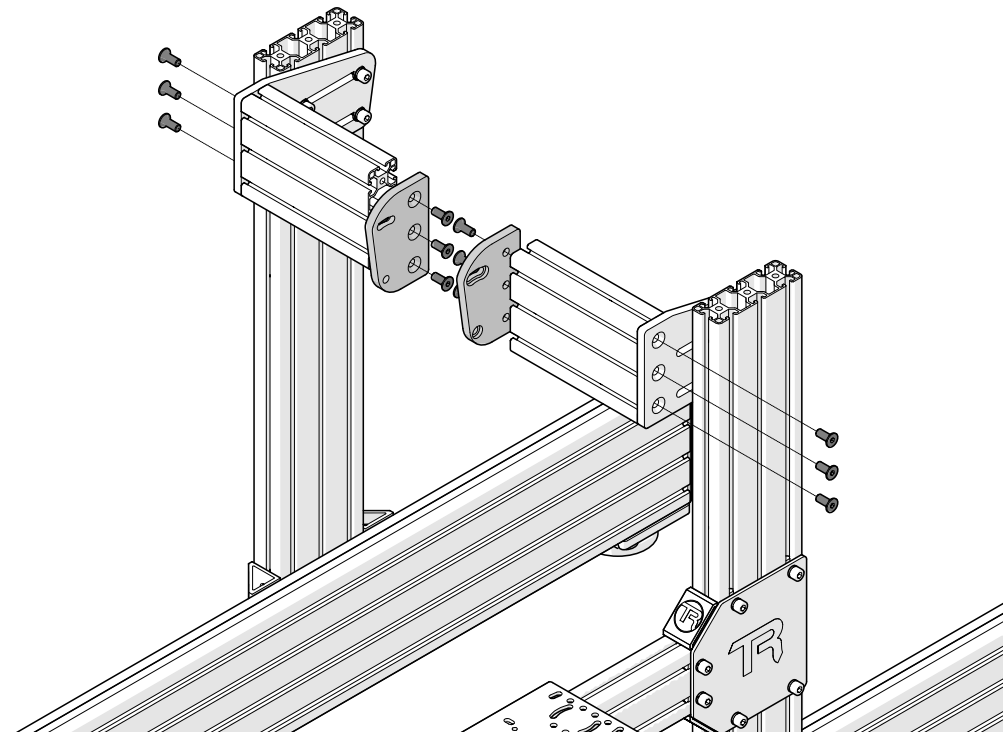
SF-M8-20 x12



AT-120-180 x2



WMP x2



3

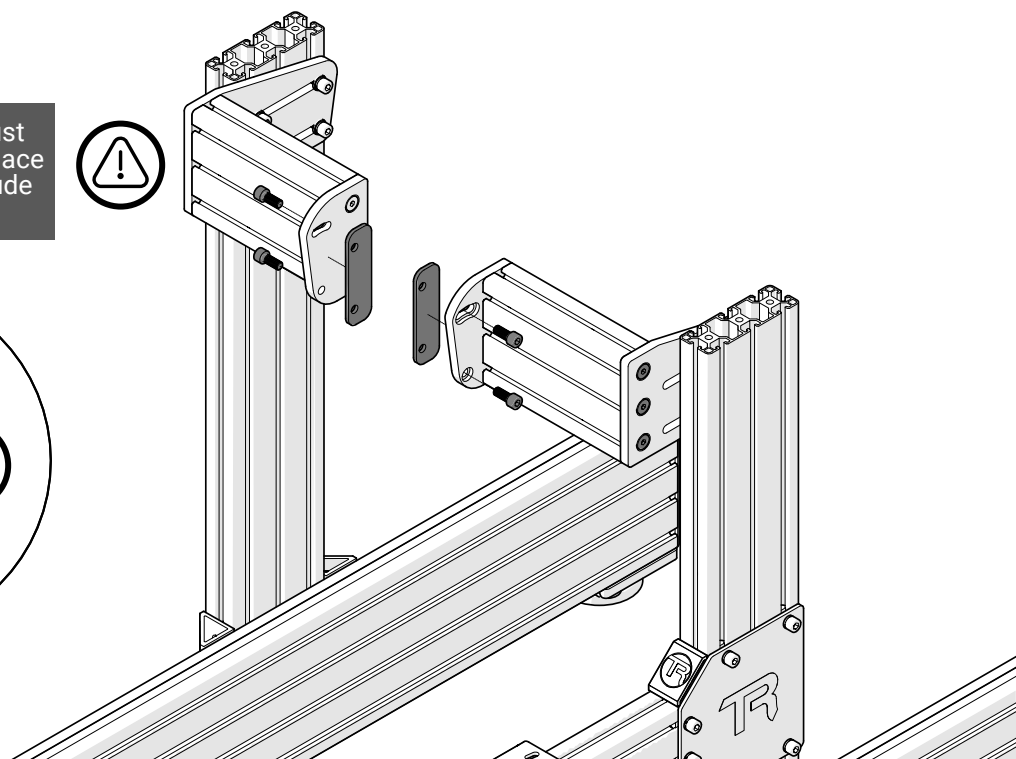
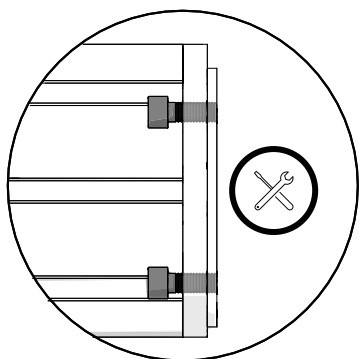


SH-M8-25 x4

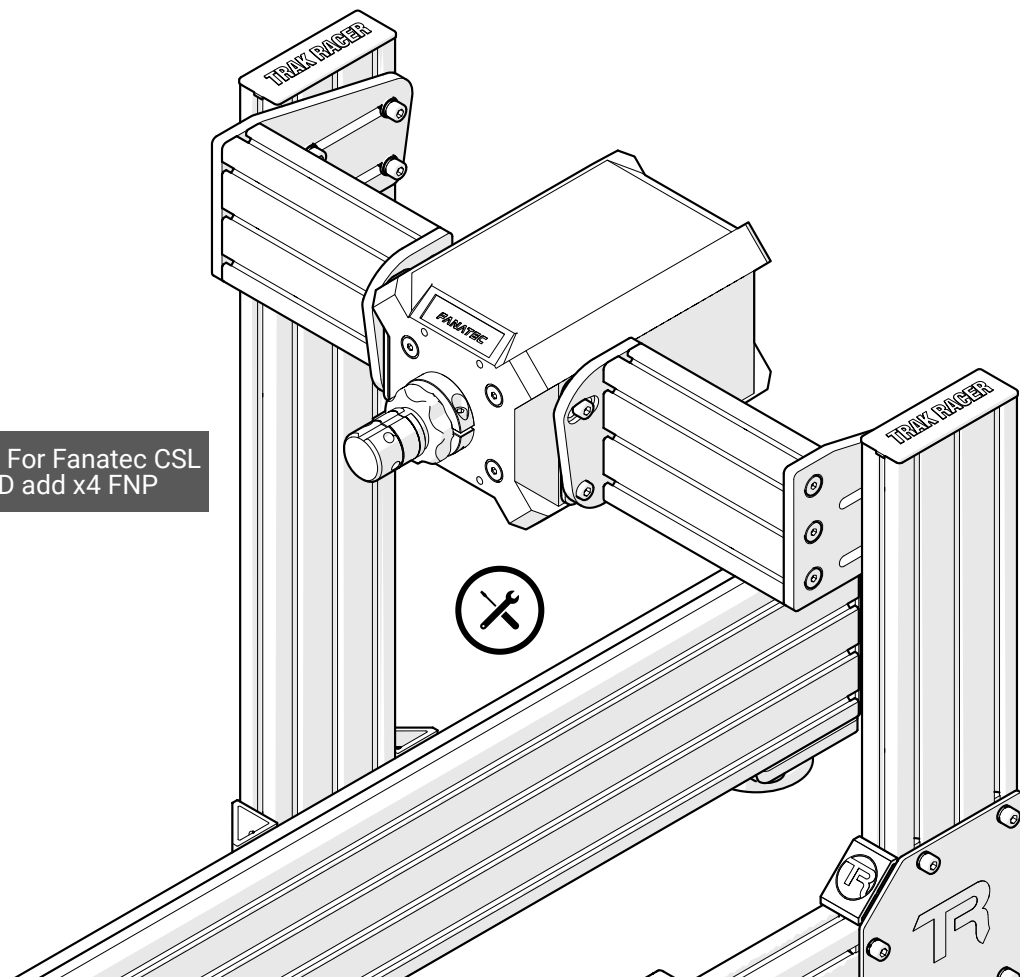


WM-TR1-FN x2

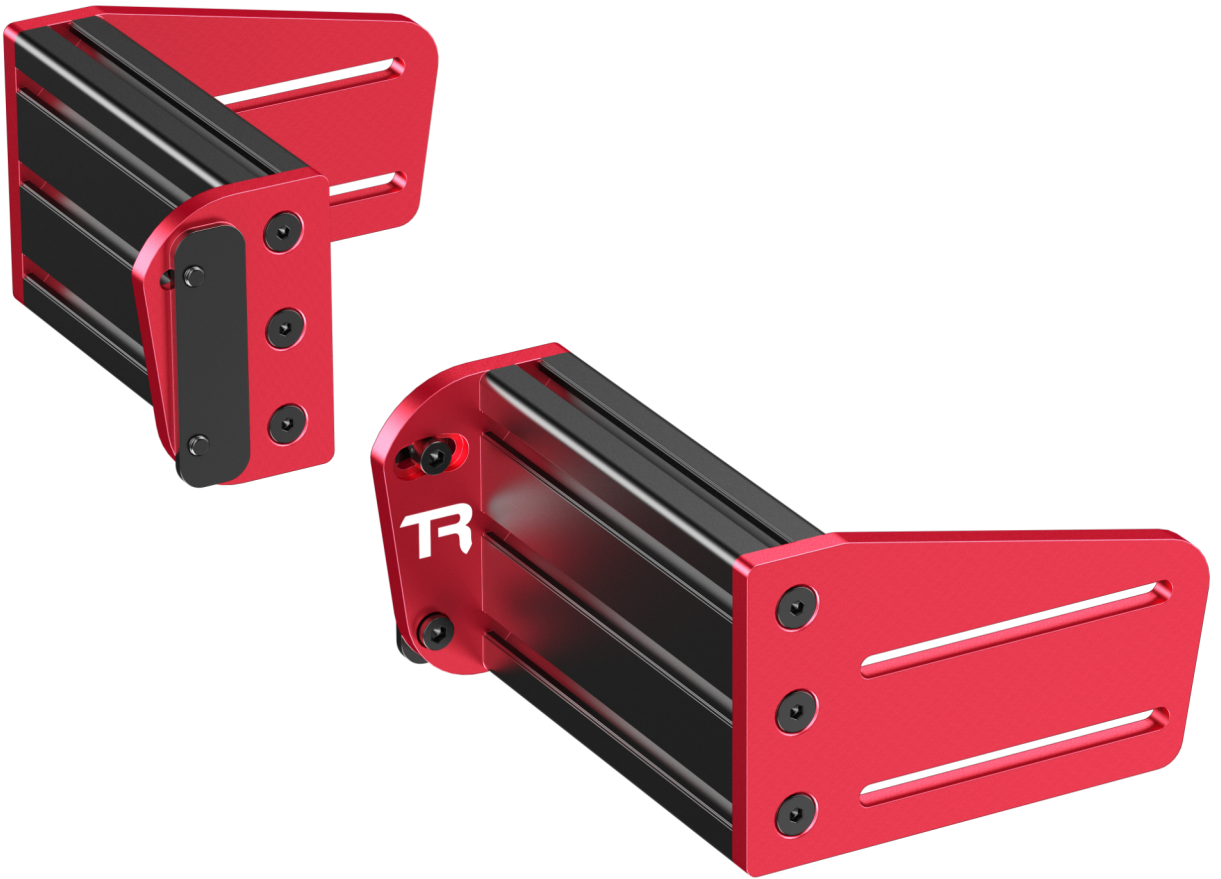
Note: Thread screws just enough to hold FNP in place so screws do not protrude past FNP plate.



Note: For Fanatec CSL DD add x4 FNP



FINISHED



Share your build online and tag us to be featured!



@trakracer



@trakracer



@trak_racer