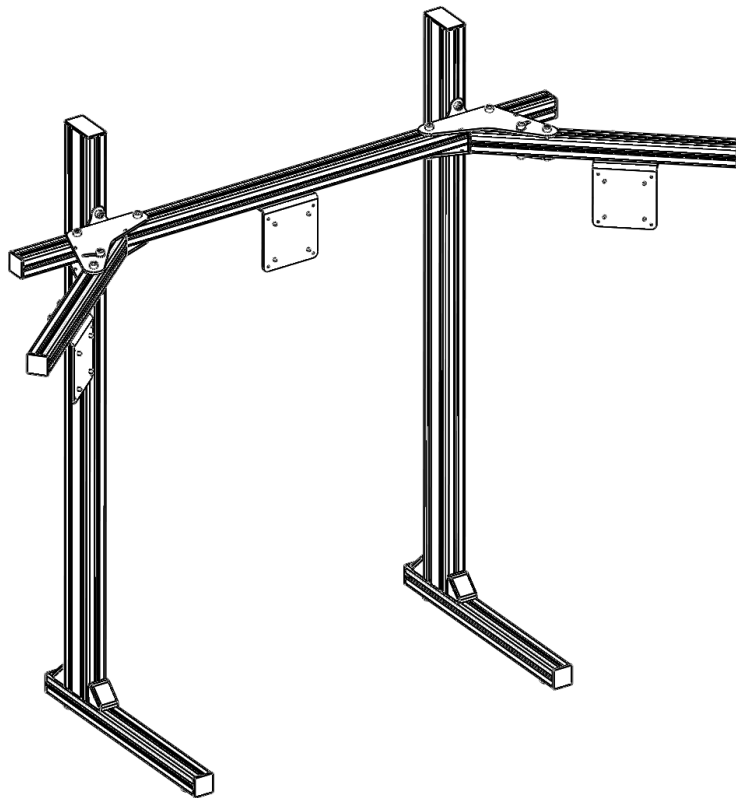
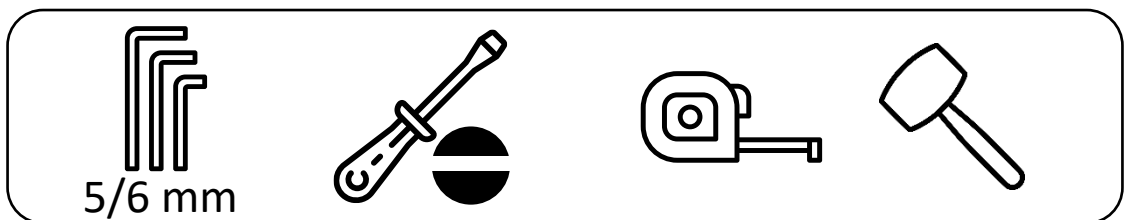


# TRIPLE MONITOR STAND

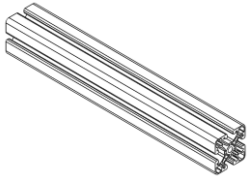
## INSTRUCTION MANUAL



REQUIRED TOOLS:

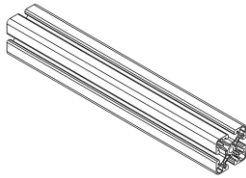


**1**



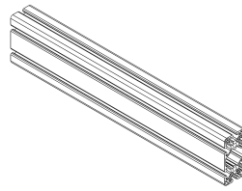
Profile 4040 L=500

**4x**



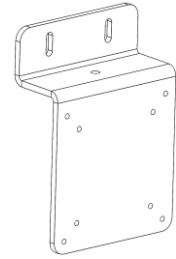
Profile 4040 L=1185

**1x**



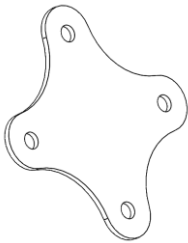
Profile 8040 L=1185

**2x**



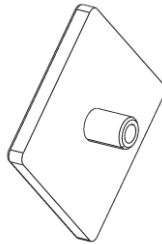
Monitor Bracket

**3x**



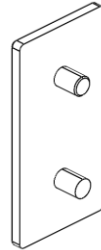
Connector Plate

**2x**



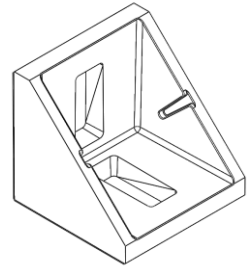
Cover 4040

**10x**



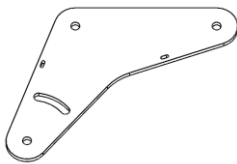
Cover 8040

**2x**



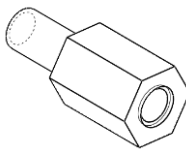
Corner 4040

**4x**



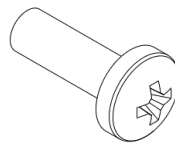
Bracket

**4x**



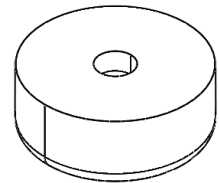
Spacer M4x10

**12x**



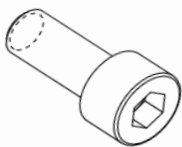
M4x12

**12x**



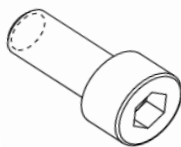
Rubber Foot 40

**4x**



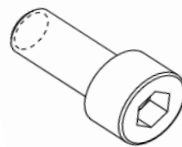
M6x16

**9x**



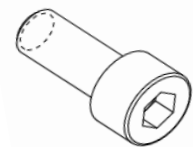
M5x12

**4x**



M8x16

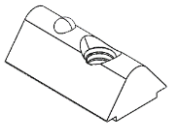
**24x**  
(16x Black)



M8x12 (Black)

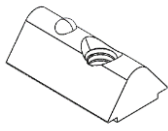
**8x**

**TREQ**



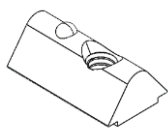
Click-in Nut M8

32x



Click-in Nut M6

9x



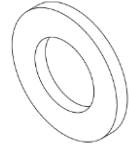
Click-in Nut M5

4x



Plain Washer M8

4x



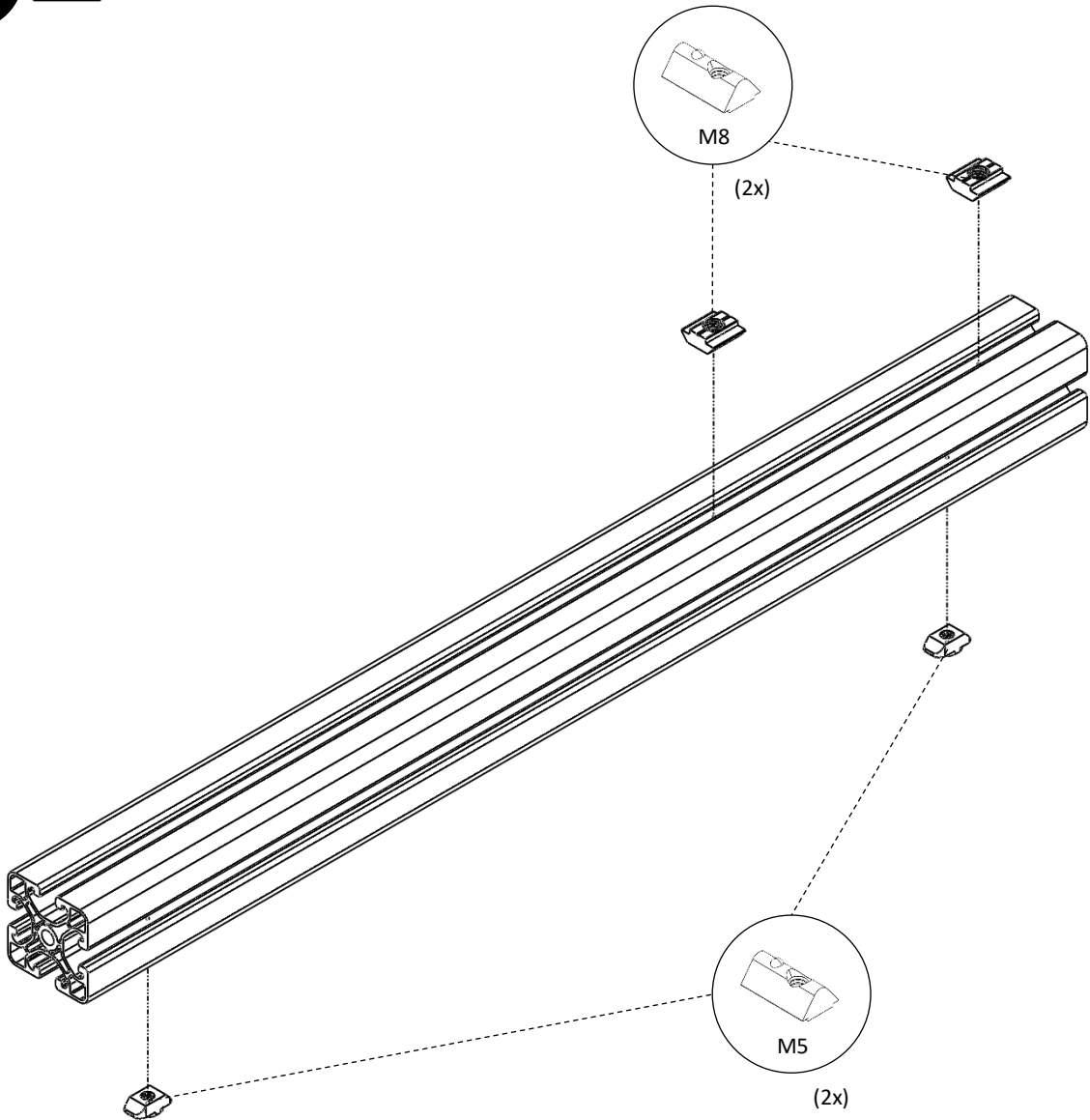
Plain Washer M6

6x

2



Left profile 4040 L=500

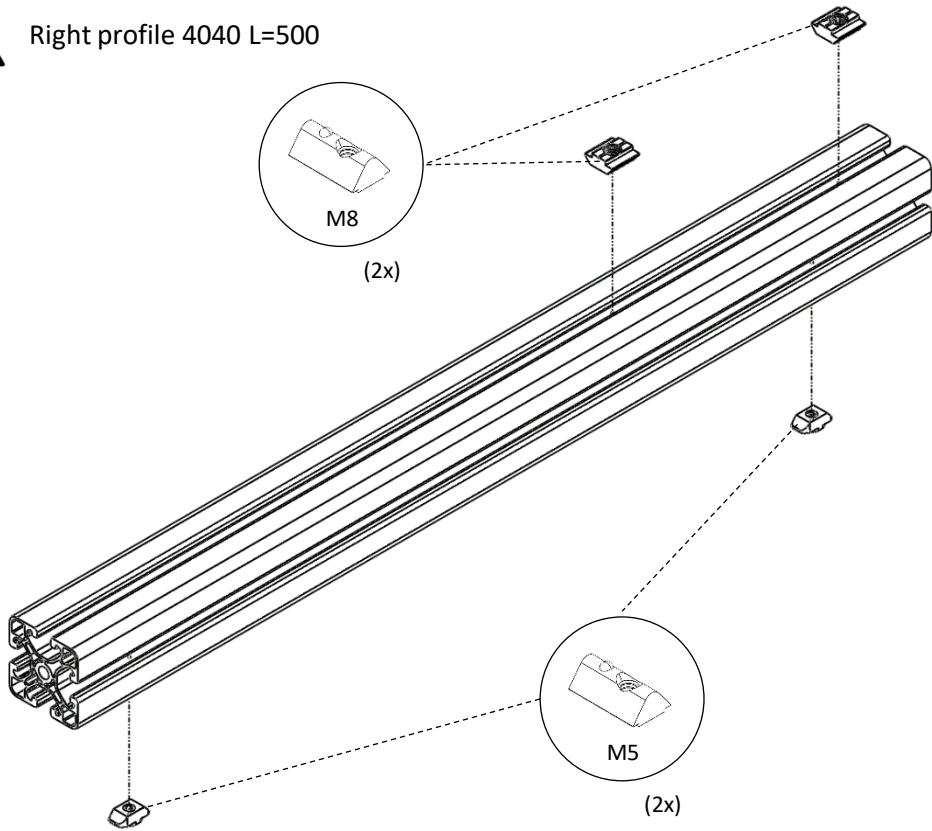


**TREQ**

3



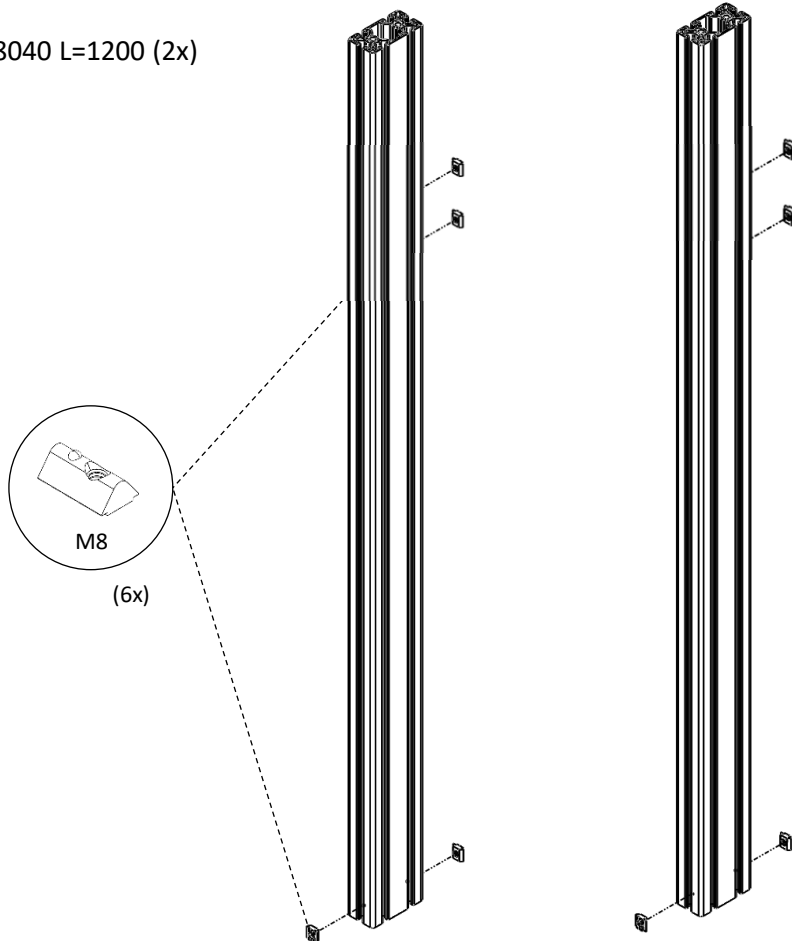
Right profile 4040 L=500



4



Profile 8040 L=1200 (2x)

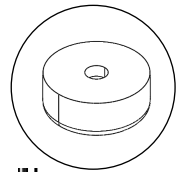


**TREQ**

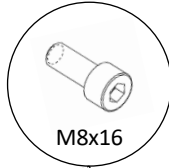
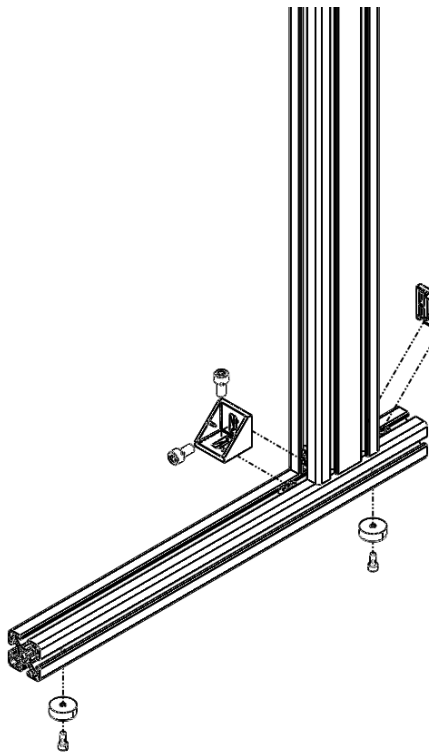
5



Assemble the stands for the Tripple Monitor Mount

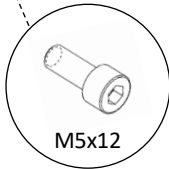
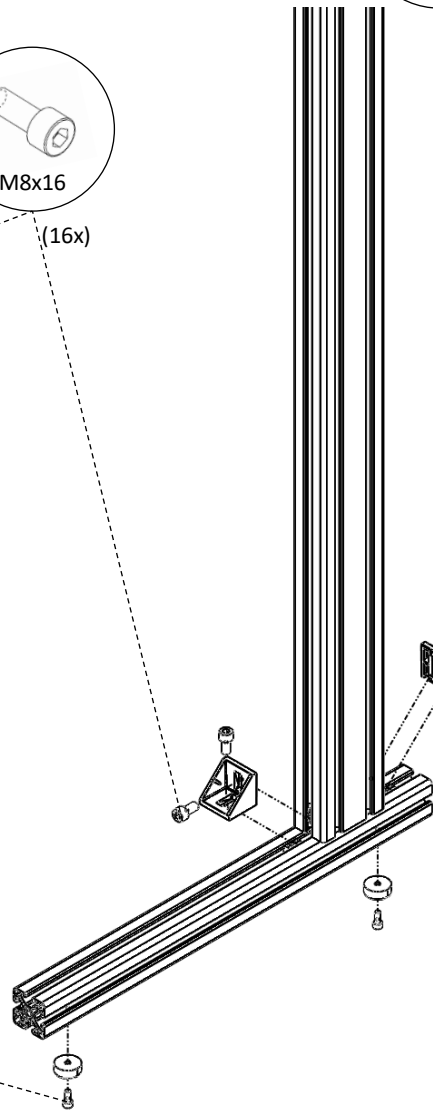


(4x)



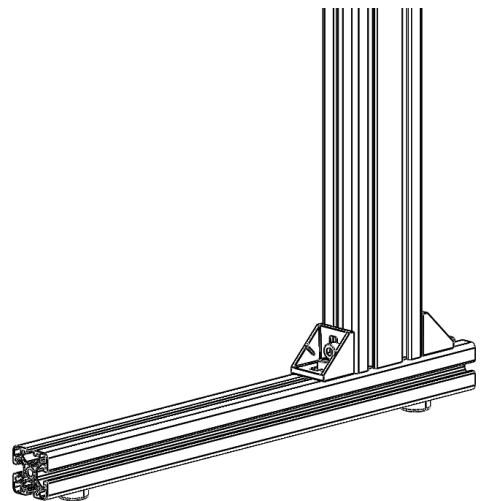
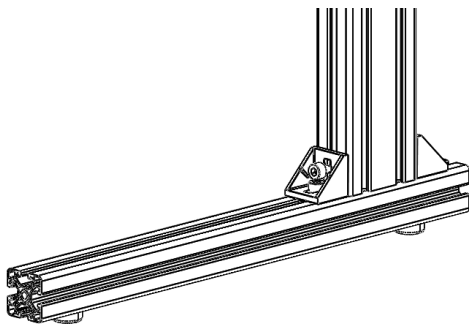
M8x16

(16x)



M5x12

(4x)

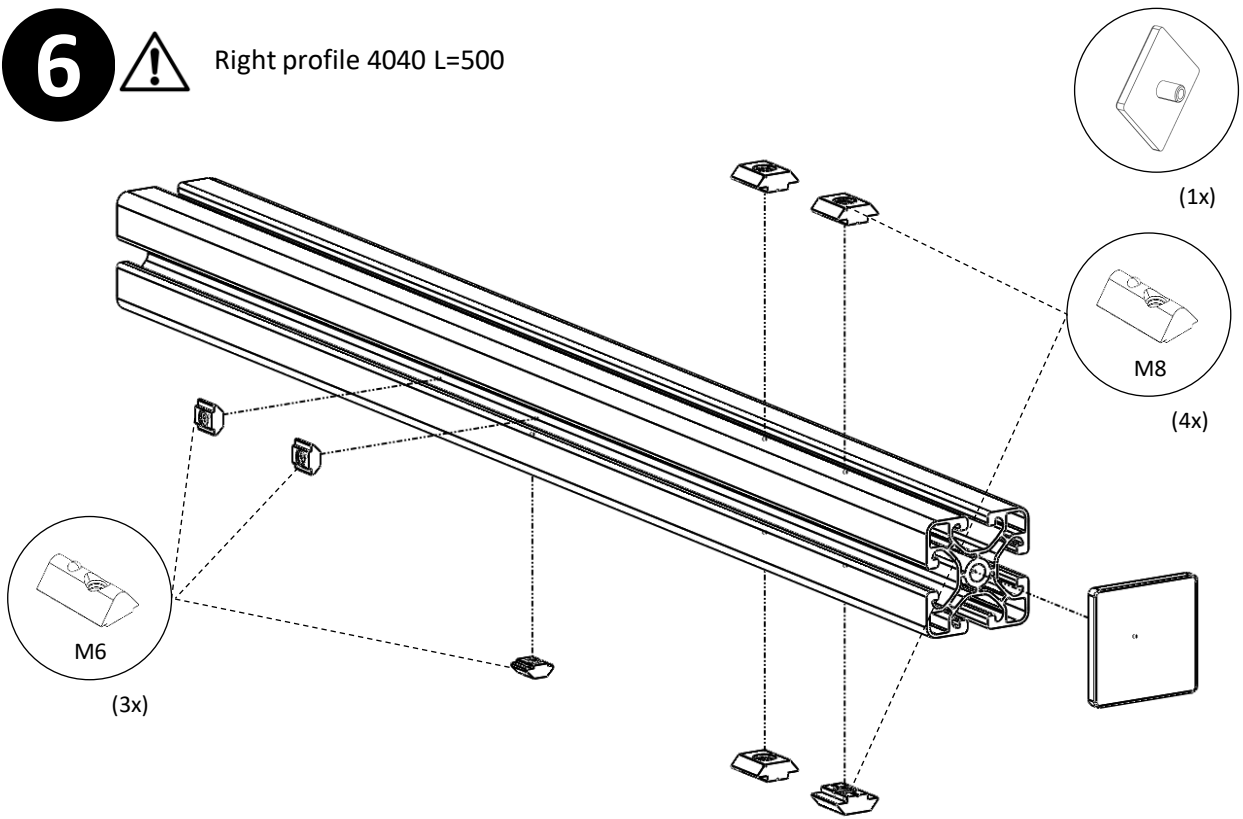


**TREQ**

6



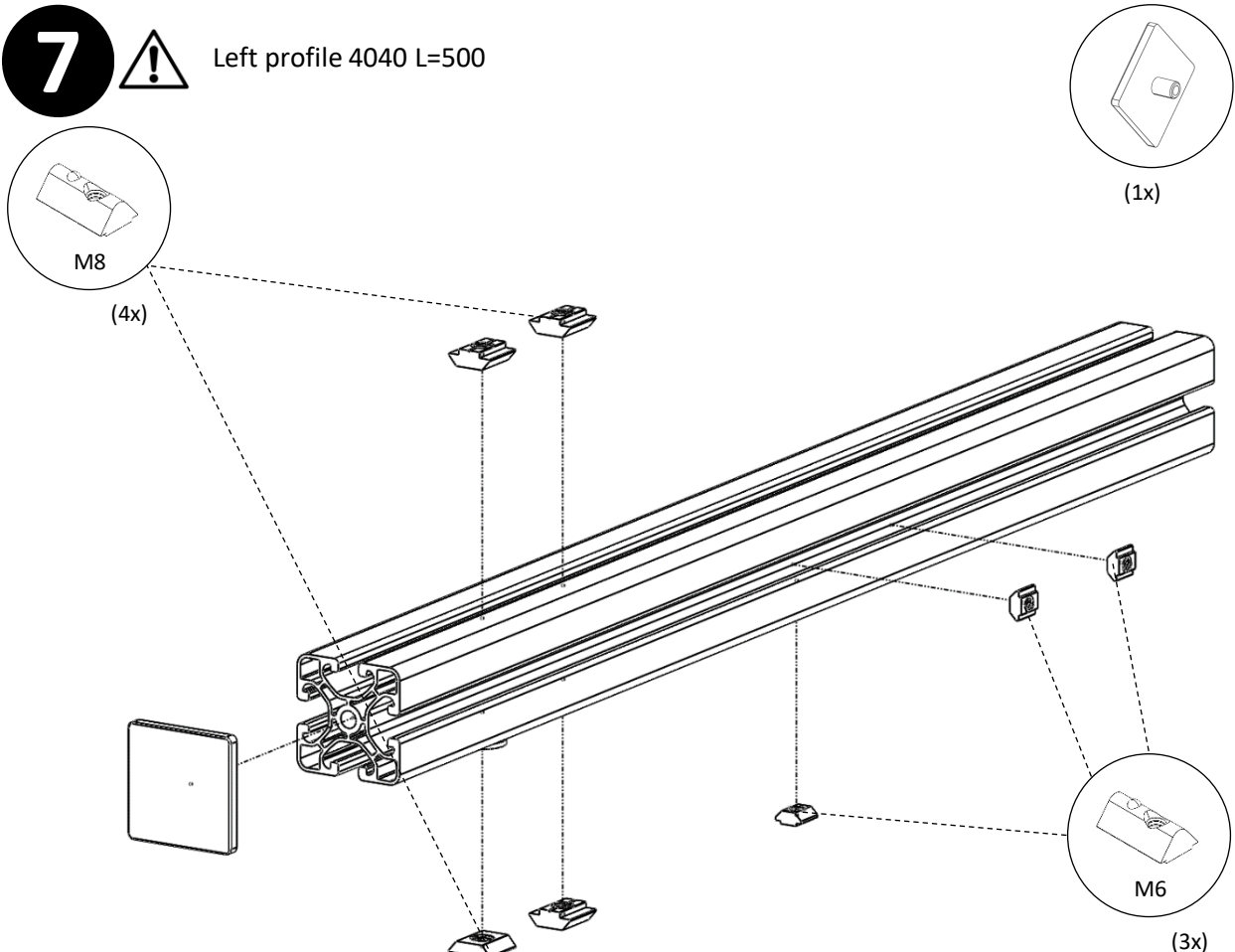
Right profile 4040 L=500



7

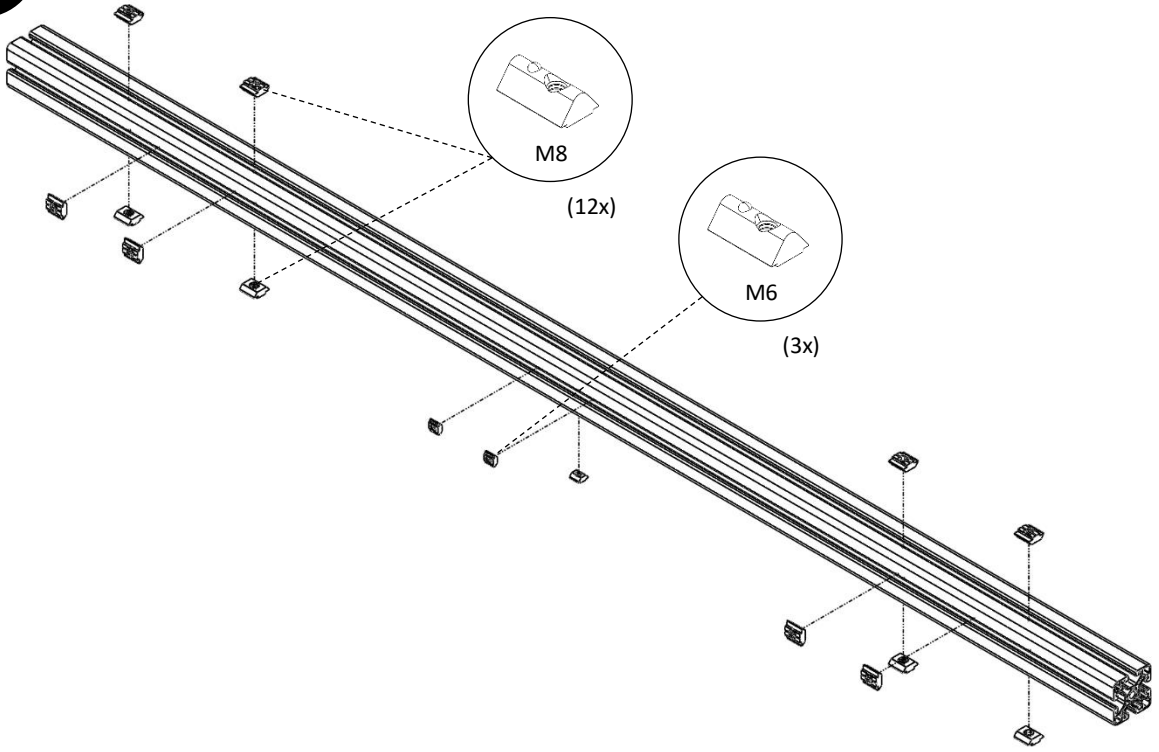


Left profile 4040 L=500

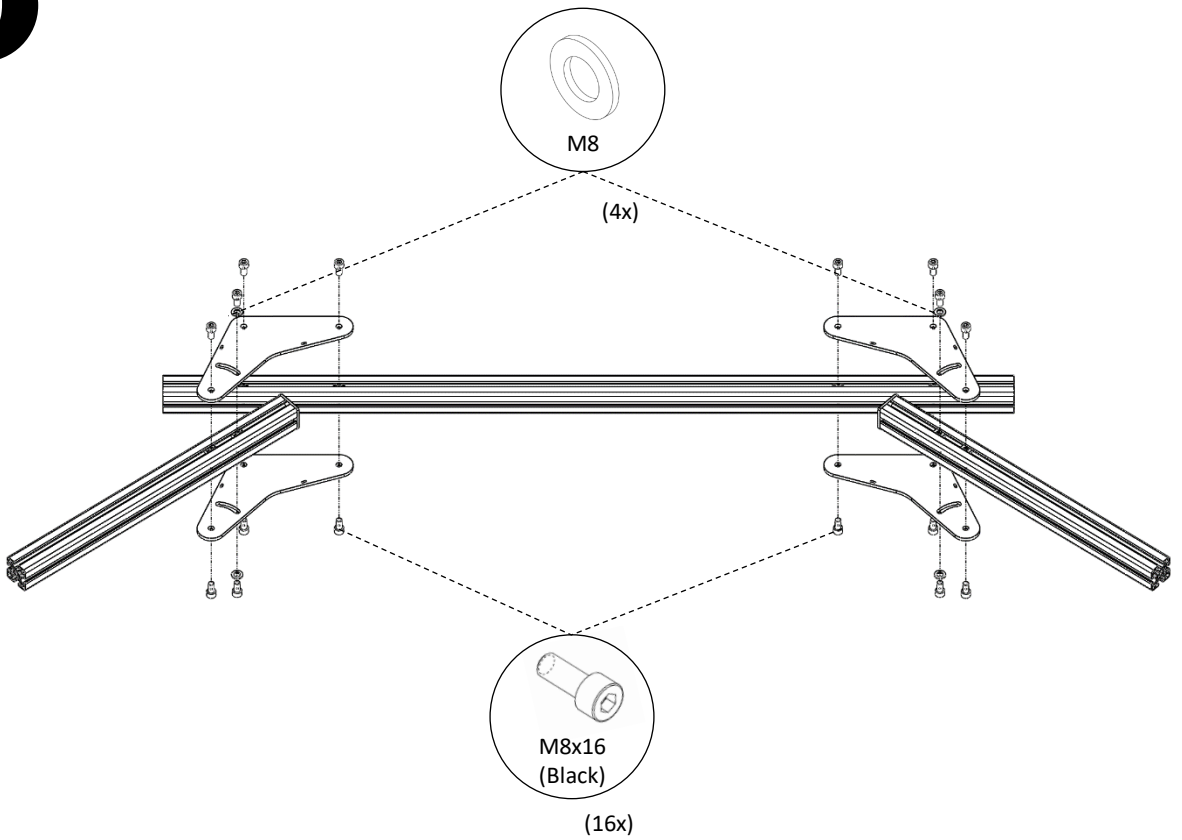


**TREQ**

8

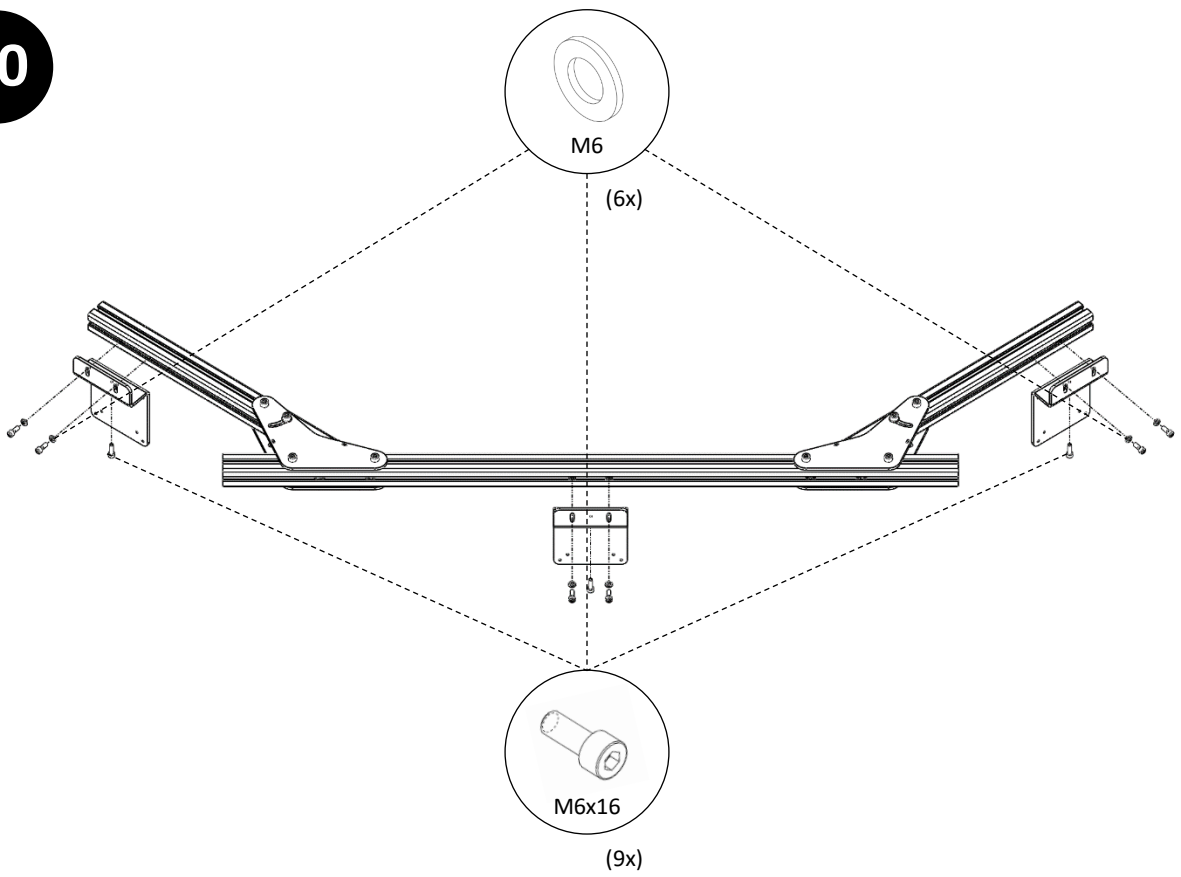


9

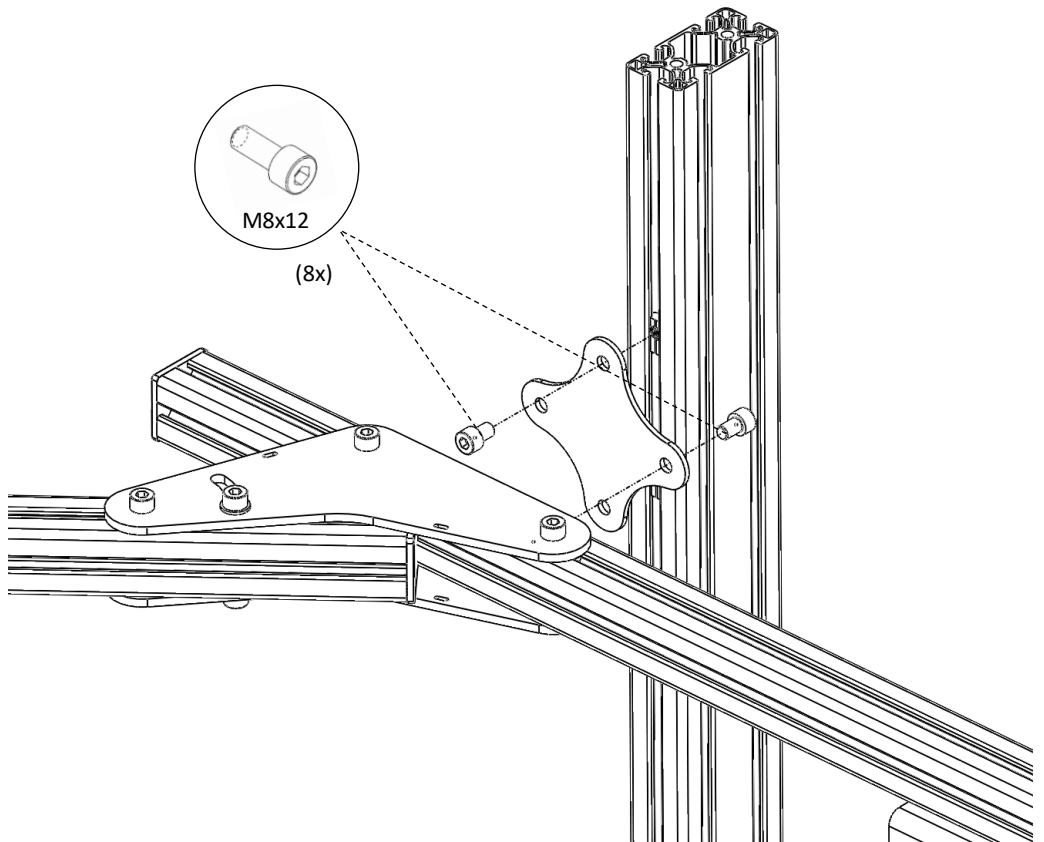


**TREQ**

10



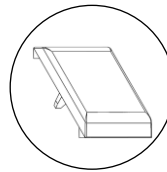
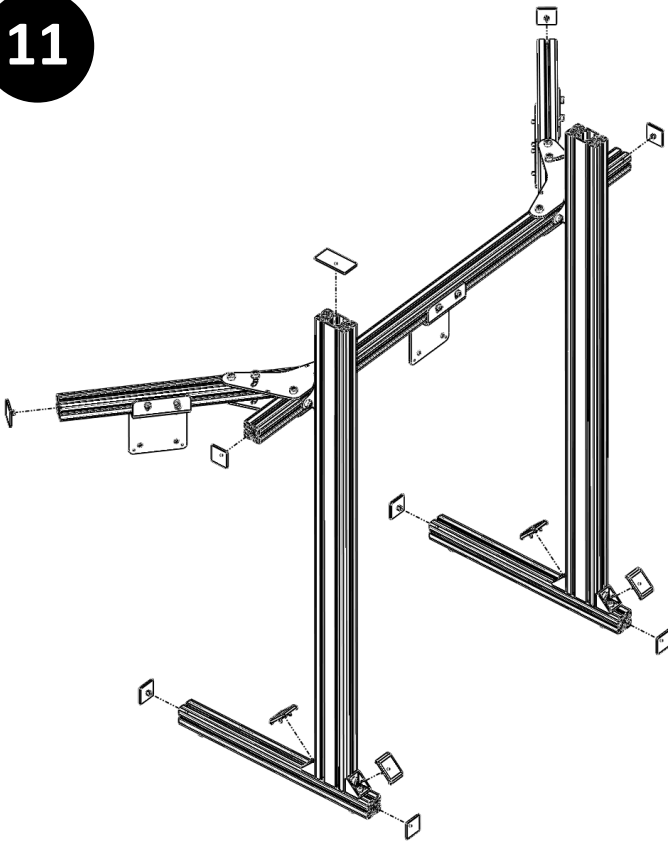
11



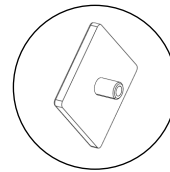
**TREQ**



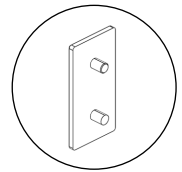
11



(4x)



(10x)

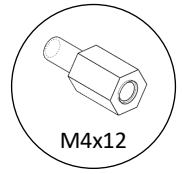
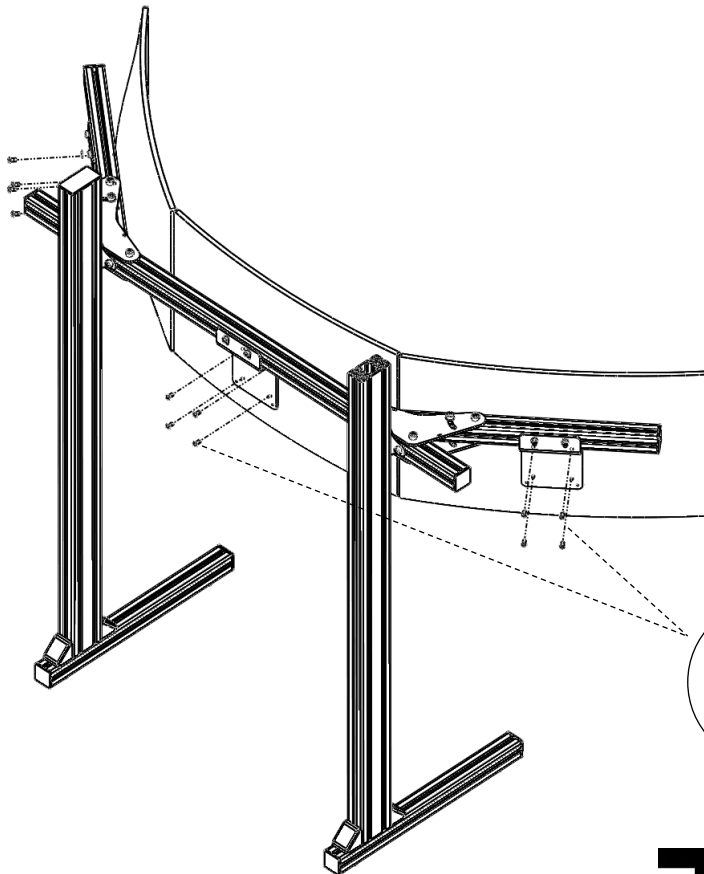


(2x)

12

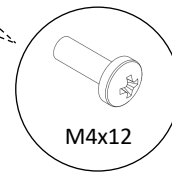


If necessary, use M4x10 spacers (included in package)



M4x12

(12x)



M4x12

(12x)

**TREQ**