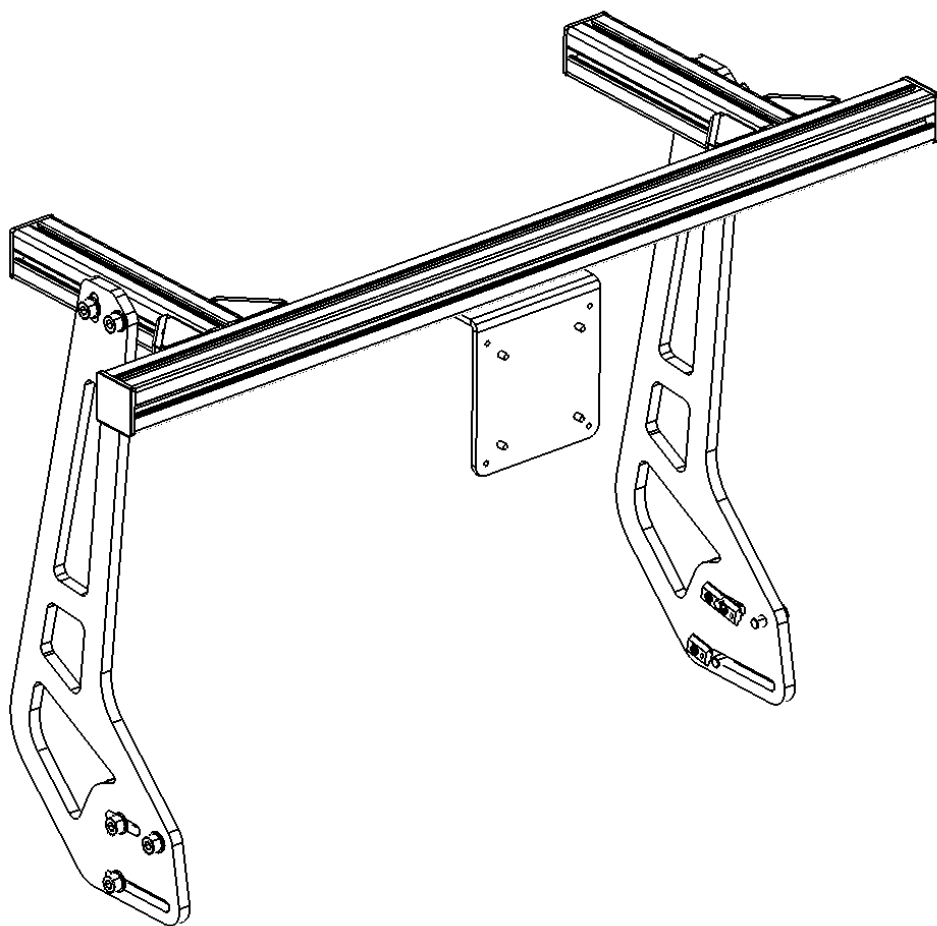
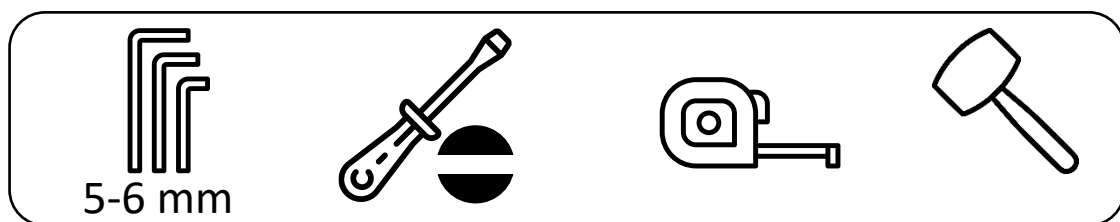


UNIFIED SINGLE MONITOR MOUNT

INSTRUCTION MANUAL

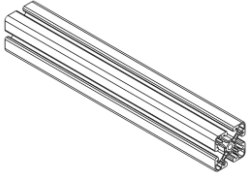


REQUIRED TOOLS:



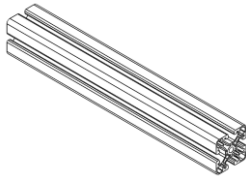
TREQ

1



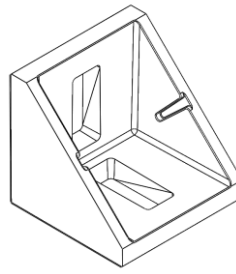
Profile 4040 L=220

2x



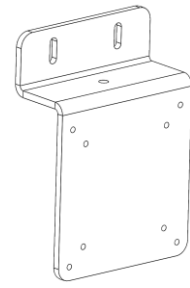
Profile 4040 L=780

1x



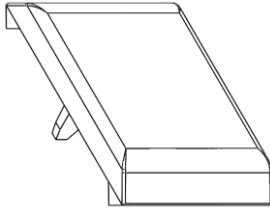
Corner 4040

4x



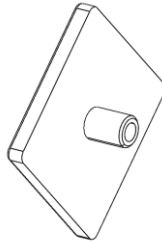
Monitor Bracket

1x



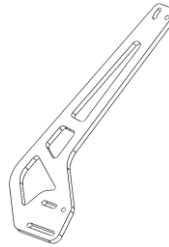
Corner Cover 4040

4x



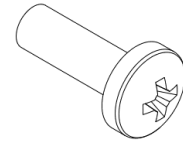
Cover 4040

4x



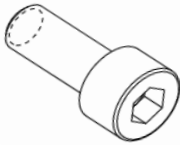
Bracket

2x



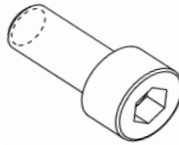
M4x12

4x



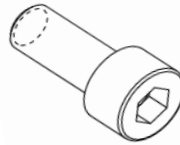
M8x20 (Black)

10x



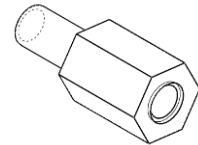
M8x16

8x



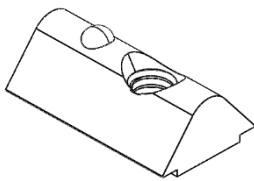
M6x16 (Black)

2x



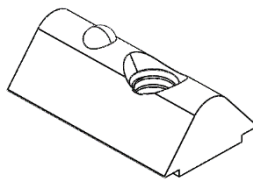
M4 Spacer

4x



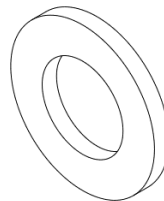
Click-in Nut M8

18x



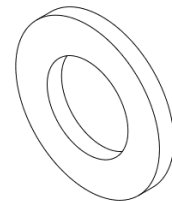
Click-in Nut M6

2x



Plain Washer M8

10x



Plain Washer M6

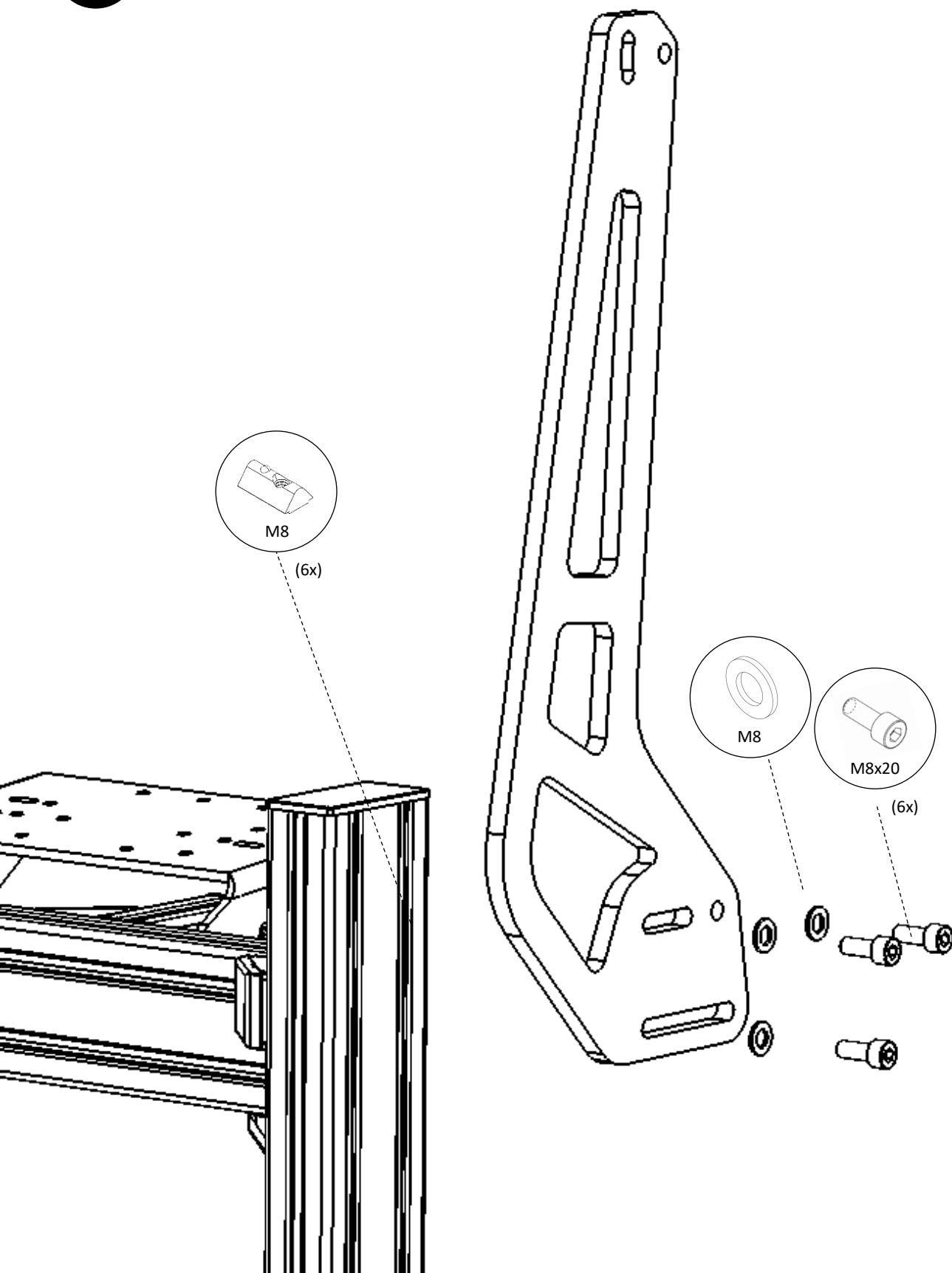
2x

TREQ

2

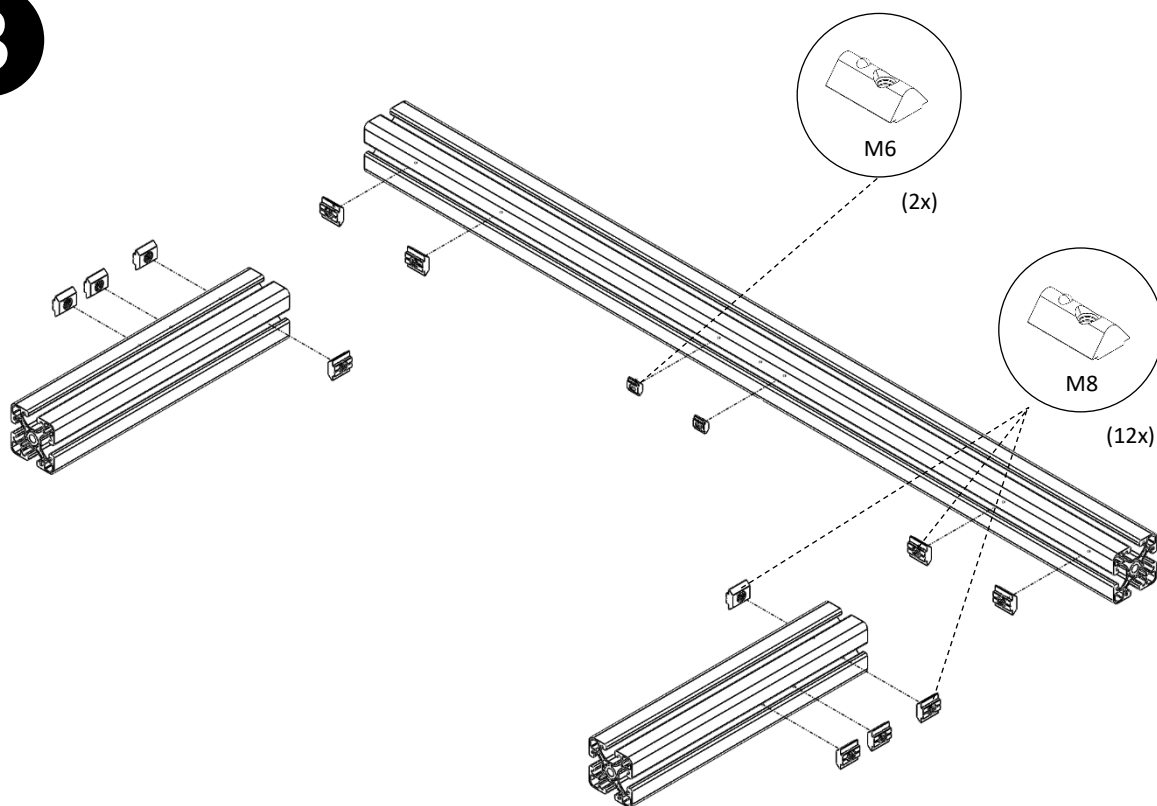


Mount both brackets to the upright profiles of your rig, using the black M8x20 bolts and the M8 washers.

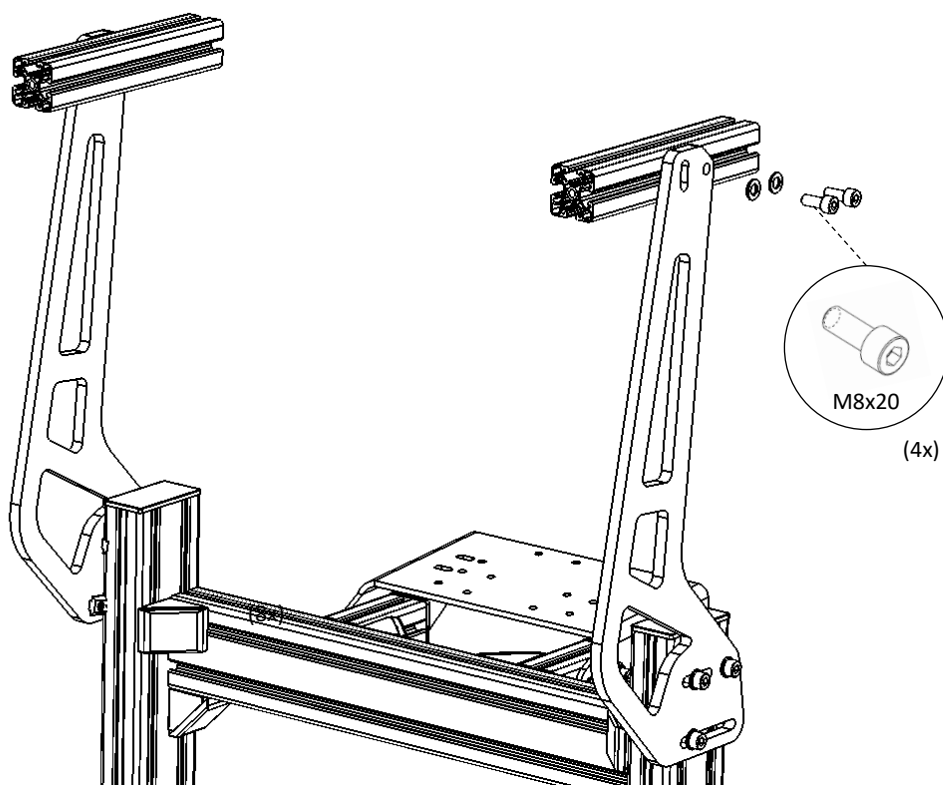


TREQ

3



4

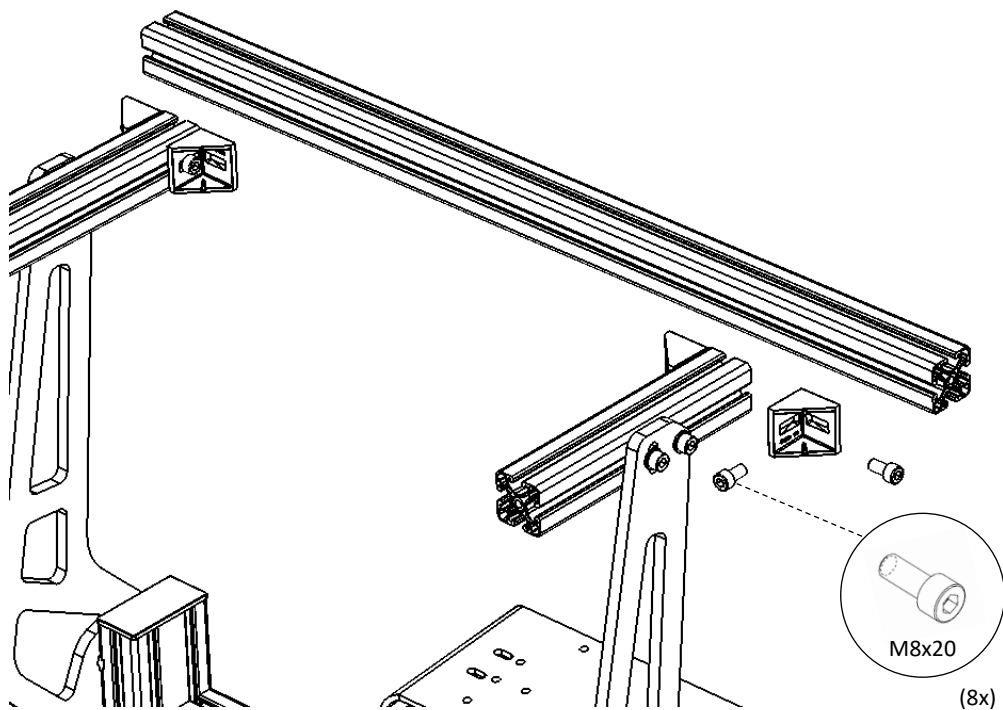


TREQ

5



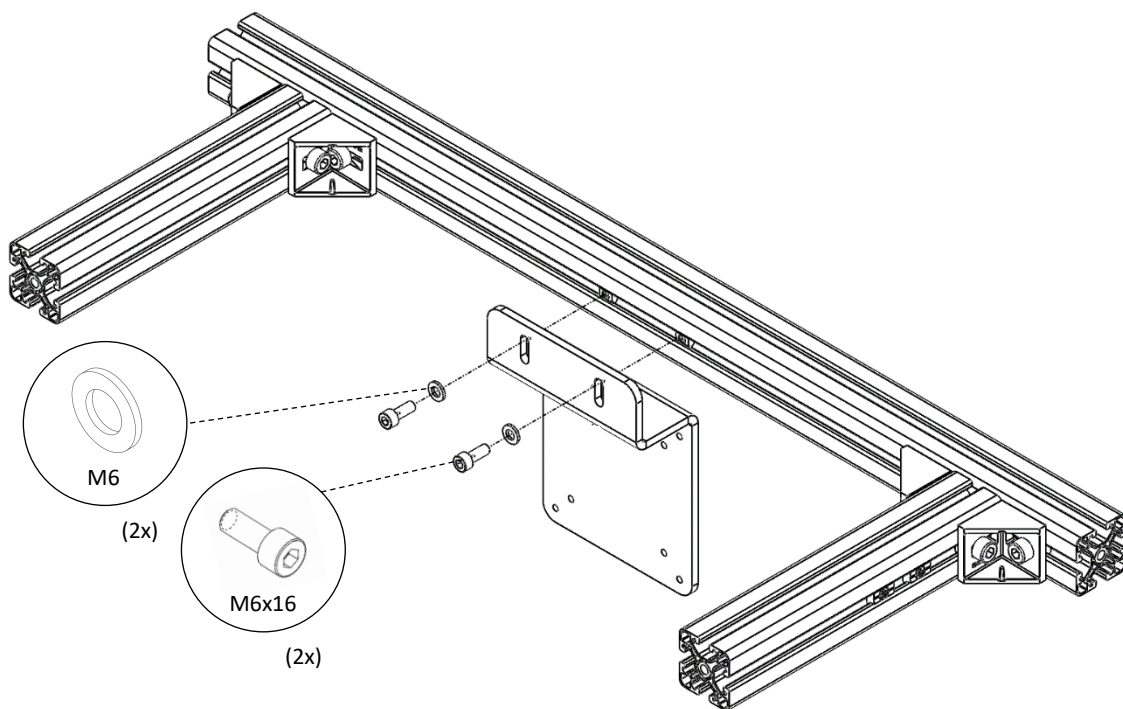
Mount the 40x40 L=780 profile using the 4 corner brackets, together with the 8 M8x16 bolts.



6



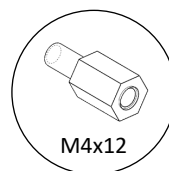
VESA bracket can be mounted up- or downwards. For screens > 27" we recommend mounting it upwards.

**TREQ**

7

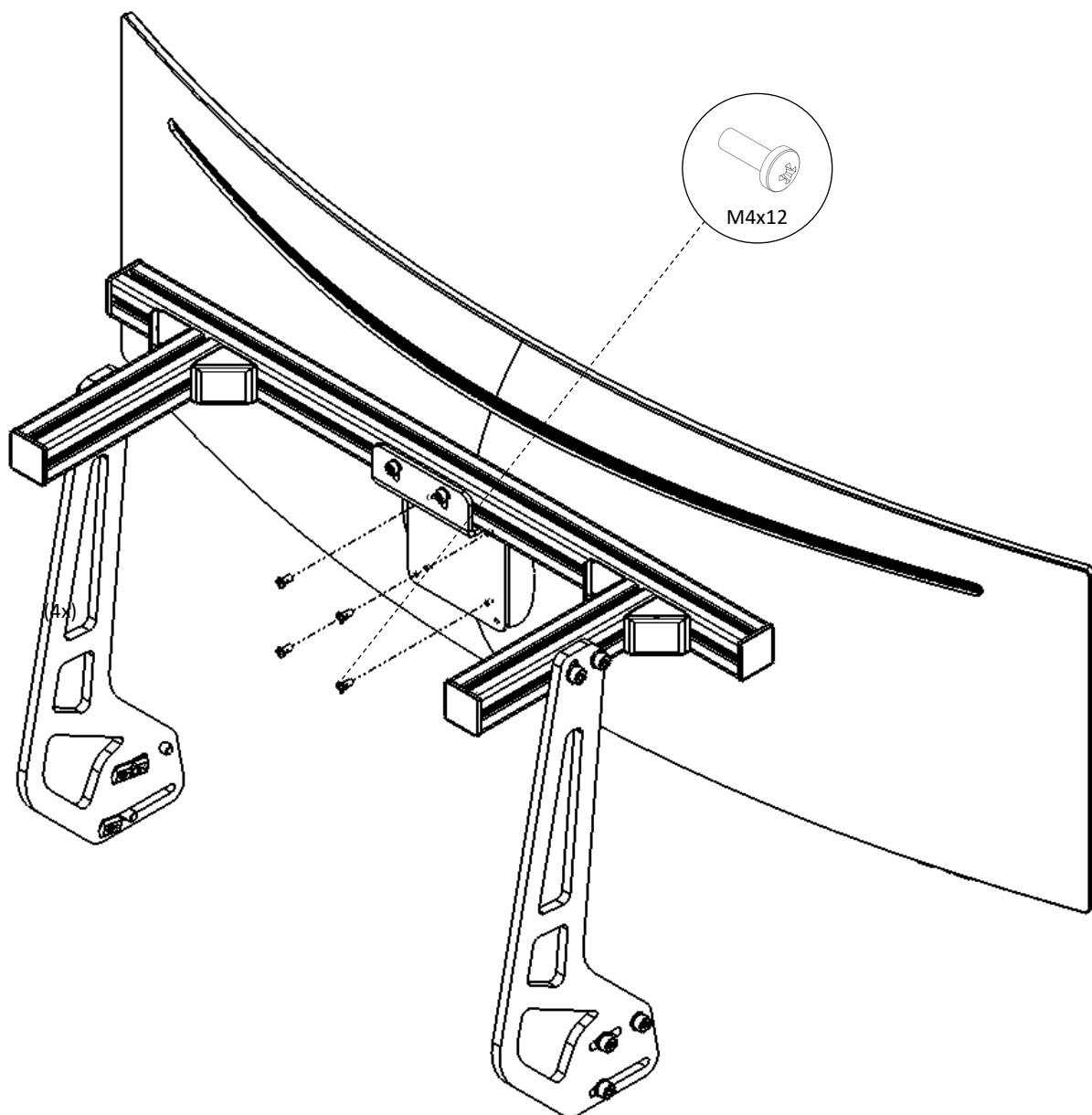


If necessary, use M4x10 spacers (included in package)



M4x12

(4x)

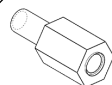


TREQ

8

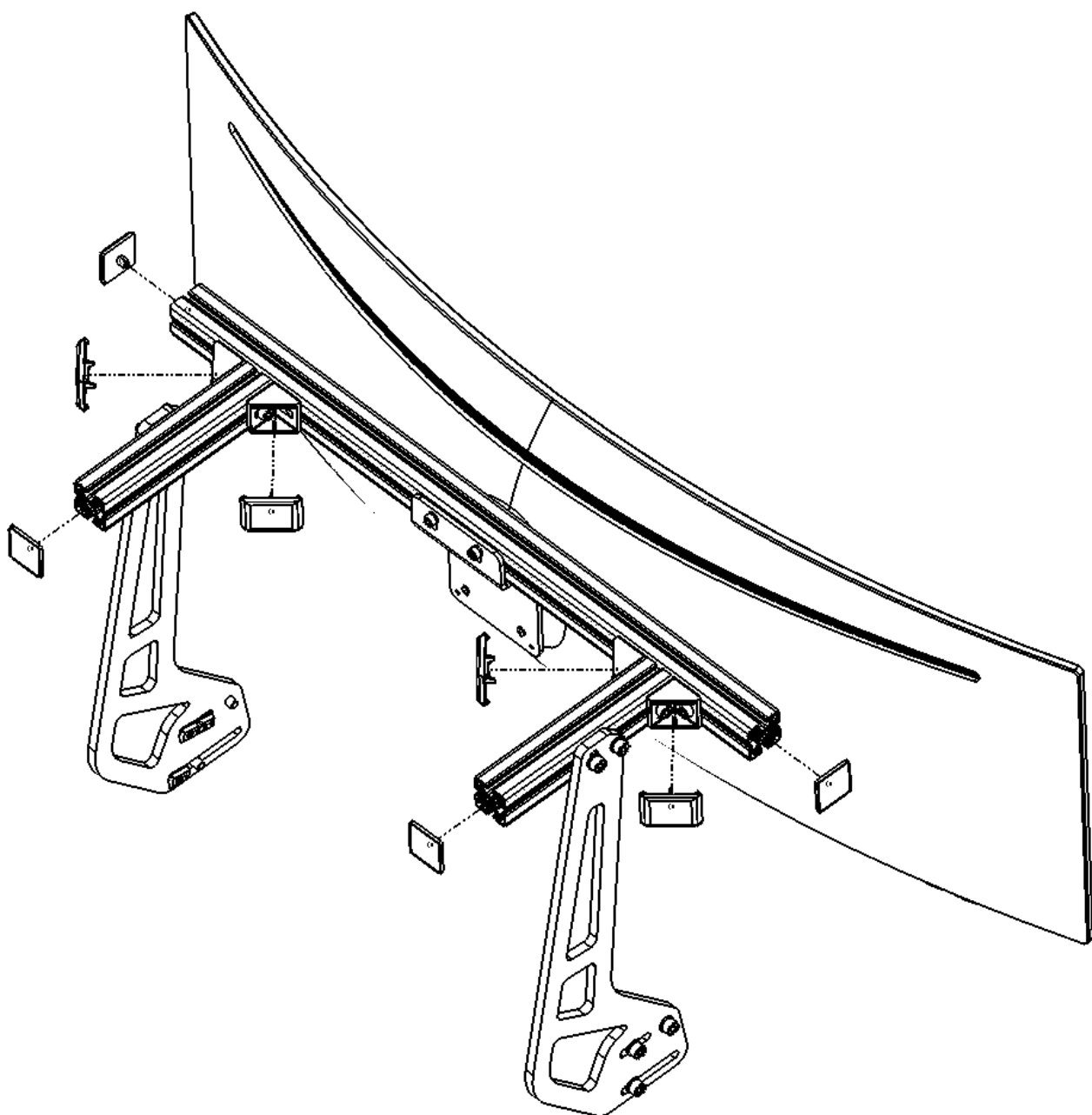


If necessary, use M4x10 spacers (included in package)



M4x12

(4x)



TREQ